

RESEARCH AND POSTGRADUATE STUDY GUIDE



CONTENTS

Welcome from the Vice-Chancellor	1
Wellington, New Zealand	3
One university, four city campuses	4
International engagement	5
Research highlights	6
Faculty of Graduate Research	7
Postgraduate study and your career	8
Funding your study	9
Overview of graduate and postgraduate programmes at Victoria	10
Faculty of Architecture and Design	12
Faculty of Commerce and Administration	16
Faculty of Education	20
Faculty of Engineering	22
Faculty of Humanities and Social Sciences (including New Zealand School of Music)	24
Faculty of Law	28
Faculty of Science	30
Student focus	34
Contacts	39

IMPORTANT NOTICE

Victoria University uses all reasonable skill and care to ensure the information contained in this document is accurate at the time of being made available. However, matters covered by this document are subject to change due to a continuous process of review and to unanticipated circumstances. The University therefore reserves the right to make any changes without notice. So far as the law permits, the University accepts no responsibility for any loss suffered by any person due to reliance (either whole or in part) on the information contained in this document, whether direct or indirect, and whether foreseeable or not.

WELCOME FROM THE VICE-CHANCELLOR



Nau mai haere mai and a very warm welcome to Victoria University of Wellington.

Victoria University, in the heart of New Zealand's capital city, offers students a unique postgraduate experience. Our location provides students with a wealth of opportunities to collaborate with, and learn from, partners in government, the public sector, science and technology organisations and with the local business community, with its strengths in information technology, law and the creative industries.

The University has more than 40 research institutes and centres based on campus as well as many partnerships and links within Wellington, New Zealand and internationally. Much of our research is in response to current issues, such as climate change, health science and emerging technologies.

Why Victoria? Postgraduate students have many choices, but we believe Victoria has much to offer. With more than 100 years' experience delivering high-calibre postgraduate education, we are known for innovative and leading-edge research, and this reputation means we attract talented and highly respected research leaders from around the world to join our academic staff.

Choosing Victoria for your postgraduate study means you will work alongside these award-winning teachers and researchers, gaining a qualification that is internationally recognised and highly respected. We are dedicated to encouraging and supporting you throughout your postgraduate studies.

This booklet will get you started on your journey to successfully completing postgraduate study at Victoria. We hope you will find it helpful and we encourage you to visit our website to find out more.

Join us—we welcome you.

A handwritten signature in black ink, reading "Pat Walsh". The signature is written in a cursive, flowing style.

Professor Pat Walsh



WELLINGTON, NEW ZEALAND

“Many people, like you, are searching the world for a place that offers community, quality of life and a genuine spirit of individuality as well as tolerance, openness and diversity.” Mayor Kerry Prendergast

Wellington—New Zealand’s lively, cosmopolitan capital

Wellington is located in the centre of New Zealand, both politically and geographically, making it easy to explore the country if you are an international student, or return home to visit friends and family if you are a New Zealand student. Built around a stunning harbour, it’s compact, safe and easy to get around.

Some things you may not know about Wellington:

- ☒ 450,000 people live in the greater Wellington region.
- ☒ Known as the cultural capital, there is a strong arts and culture scene for every taste.
- ☒ You can swim, surf, windsurf, dive, kayak and sail, all within 15 minutes of the centre of the city.
- ☒ It is the hometown of Peter Jackson, Weta Workshop, The Flight of the Conchords and the World of WearableArt and International Arts festivals.
- ☒ Wellington has been consistently ranked as the most liveable city in one of the most liveable countries in the world.
- ☒ Wellington is the 100th community to be recognised as a Safe Community by the World Health Organisation.
- ☒ There are more than 215 kilometres of scenic tracks and walkways in Wellington through the natural reserves surrounding the city.
- ☒ It is home to Zealandia: The Karori Sanctuary Experience, with some of the rarest and most extraordinary wildlife on the planet.

Wellington is home to many national organisations found nowhere else in the country, all of which have strong teaching and research linkages to Victoria:

- ☒ Parliament
- ☒ Court of Appeal
- ☒ Supreme Court
- ☒ National Library
- ☒ Archives New Zealand
- ☒ Parliamentary Library.

Amongst its cultural assets are:

- ☒ Museum of New Zealand Te Papa Tongarewa
- ☒ Alexander Turnbull Library
- ☒ New Zealand Film Archive
- ☒ New Zealand Symphony Orchestra
- ☒ New Zealand Drama School
- ☒ Toi Whakaari: NZ Drama School.

It also has the highest concentration of science organisations in the country, including many Crown Research Institutes.

For more information about what Wellington has to offer, visit www.wellingtonnz.com

ONE UNIVERSITY, FOUR CITY CAMPUSES



Victoria University's four campuses, consisting of purpose-built dynamic teaching and study spaces, take advantage of our position within the capital city of New Zealand at the heart of the government, business, creative and scientific centre of the country.

Kelburn Campus is home to the Faculties of Humanities and Social Sciences, Science and Engineering. Many of the administrative functions, and the full range of student services, are also located on the Kelburn Campus, as is the recently renovated Recreation Centre. Kelburn Campus houses the main library, with one of the best views in a city full of wonderful views, the Malaghan Institute of Medical Research, the Adam Art Gallery, the Antarctic Research Centre and the Classics Museum.

Pipitea Campus comprises the Faculty of Law, housed in the historic Old Government Buildings opposite Parliament, Rutherford House and the West Wing of Wellington Railway Station where you will find the Faculty of Commerce and Administration, Professional and Executive Development, and Community Continuing Education.

Te Aro Campus is home to the Faculty of Architecture and Design near upper Cuba Street, right in the middle of Wellington's liveliest cultural area. With its huge atrium housing frequent exhibitions of student work, it features state of the art facilities including the largest AVID video editing suite in the country.

Karori Campus, a 10-minute bus ride from Kelburn Campus, is home to the Faculty of Education, which offers a full range of teaching and education programmes based around a growing research environment.

Each campus has its own library and specialist facilities. To walk between any of the campuses, except Karori, takes about 15 minutes.

Take a tour of our campuses at www.victoria.ac.nz/home/viclife/wellington/vicwn.aspx or if you are visiting Wellington and would like to take a tour, contact the Student Recruitment, Admission and Orientation team at course-advice@vuw.ac.nz

INTERNATIONAL ENGAGEMENT

Victoria is known and respected internationally for its research having fostered strong and significant international links in teaching and research for the past century.

The University prides itself on teaching programmes of national significance and of international quality. Victoria collaborates with nearly 100 universities worldwide including staff and student exchange agreements, collaborative research and strategic partnerships with top universities and governments around the world.

International students at Victoria make a huge contribution to the academic life and rich cultural mix of both the University and Wellington city. Our international student community is diverse, with students from 80 countries.

Victoria International (VI) is the office dedicated to international students at Victoria University of Wellington. VI staff handle admissions, enrolment and provide award winning student support to help students get the very best out of their time at Victoria. VI welcomes all international students on arrival and organises an orientation programme to help students get established into life at the University and the city. All faculties have an Academic Adviser available for international students.

Victoria has a fifth campus located in Ho Chi Minh City, Vietnam, the only New Zealand university to have an off-shore campus, at which 70 students are studying commerce.

For more information, visit www.victoria-international.ac.nz

VICTORIA INTERNATIONAL LEADERSHIP PROGRAMME (VILP)

The VILP is an extra-curricular programme using themes of global leadership, connectedness, sustainability and cross-cultural communication. The first of its type in New Zealand, the programme consists of seminars and debates, speaker events and experiential activities run over the length of a degree programme. VILP enables students to better understand pressing global issues and develop valuable skills of interest to employers around the world. VILP is open to all Victoria students for no additional cost.

For more information, visit www.victoria.ac.nz/home/vilp

VICTORIA OVERSEAS EXCHANGE (VIC OE)

Vic OE enables you to complete a trimester or a full year of your Victoria degree at an overseas university. We have exchange partnerships with more than 100 universities in 30 countries, including University of California, Universidad de Chile and the University of Gronigen in the Netherlands.

If you go on a Vic OE, you pay Victoria tuition fees and are eligible for the StudyLink Student Loan and Allowance as per normal, as well as funding from Vic OE towards your exchange. You may also be eligible for a number of other scholarships. You can earn credit towards your Victoria degree, and your participation also counts towards the Victoria International Leadership Programme (VILP).

For more information, visit www.victoria.ac.nz/exchange



PROFESSOR XIAOMING HUANG

DIRECTOR, NEW ZEALAND

CONTEMPORARY CHINA RESEARCH CENTRE

In April 2009, Professor Huang became the first Director of the New Zealand Contemporary China Research Centre, a national platform for China-related research and knowledge sharing.

The Centre is supported by funding from the New Zealand Tertiary Education Commission and will be led by Victoria University in partnership with the University of Otago, Auckland University of Technology and the University of Canterbury.

“This is an outstanding initiative that will greatly enhance capability building and knowledge sharing between tertiary institutions, the business community and public sector organisations in New Zealand for effective engagement with China,” says Professor Huang.

Although not limited to, the Centre’s primary research focus will be on contemporary China, initially on issues such as the political economy of China’s transformation, the marketing and business management in China, the legal framework for business in China and international law issues in New Zealand–China relations, as well as the impact of China in the Asia–Pacific region.

Professor Huang says New Zealand’s relationship with China will be central to the research. The free trade agreement—China’s first with a Western country—for example, will provide an important research area over the next few years.

RESEARCH HIGHLIGHTS

The staff and research students at Victoria are contributing to, and helping to shape, the international research frontiers of a wide range of disciplines. The University vigorously pursues implementation of its research strategy and promotes staff and postgraduate research performance at Victoria.

Victoria is New Zealand's leading research and development centre in a number of key international growth areas including bioscience, earth processes, materials science, logic, built environments, business and law, creative research, and policy, governance and society.

There are more than 40 research institutes and centres at Victoria, each undertaking challenges of international and national concern. More than \$30 million is allocated to research from the University's operating budget, and funding from external contract research has more than trebled in the past five years.

The partnership approach to research ensures that Victoria gains significant external funding for key research initiatives. In 2007 the MacDiarmid Institute for Nanotechnology and Advanced Materials received Centre of Research Excellence (CoRE) funding for a further six years, allowing its researchers to forge ahead with internationally significant research. The University is also a partner in three other in CoRE-funded initiatives.

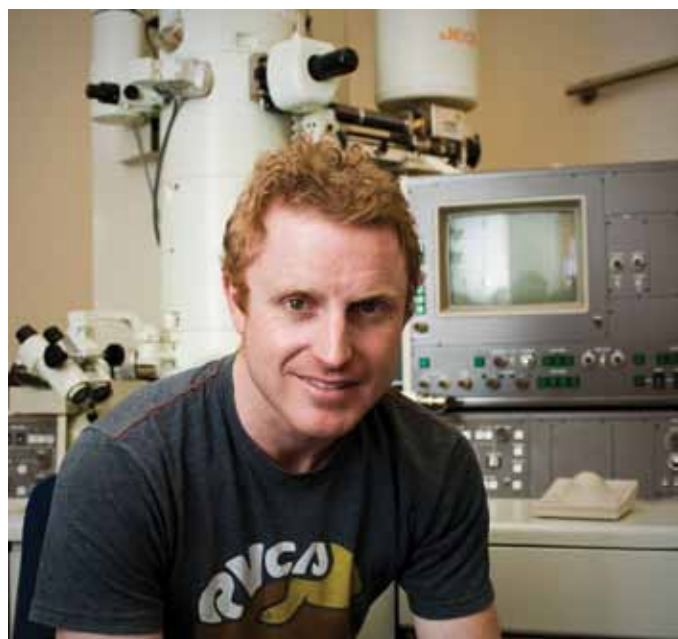
The MacDiarmid Institute, named after Victoria alumnus and Nobel Prize winner, the late Professor Alan MacDiarmid, received \$39.1 million in operational funding and capital funding of \$9.8 million. The Institute is hosted by Victoria in partnership with other New Zealand universities and Crown Research Institutes.

We have also secured numerous Foundation for Research, Science and Technology (FoRST) funding in a range of areas including Antarctic climate change, primary productivity, the structure of the Earth, tourism, the workings of Parliament and government, legal research, communication in learning and development, and industrial relations. A number of our research projects have also received Marsden Fund grants which are administered by the Royal Society of New Zealand.

Recent staff successes have covered disciplines ranging from criminology to marine biology, anti-cancer drugs to sustainable architecture.

For information about research at Victoria, see www.victoria.ac.nz/home/research/

FOR FURTHER INFORMATION, GO TO
www.rsnz.org/funding/marsden_fund
www.macdiarmid.ac.nz
www.frst.govt.nz



JOHN WATT

PHD STUDENT

NEW ZEALAND YOUNG SCIENTIST OF THE YEAR

On the surface it may sound like an impossible challenge—turning pollution into clean air.

Yet it's a challenge John Watt has tackled with considerable success being awarded the 2009 MacDiarmid Young Scientist of the Year Award, which is presented annually to postgraduate science students by FoRST. John also received \$150,000 when he was awarded the MacDiarmid Emerging Scientist of the Year, one of the inaugural Prime Minister's Science Prizes.

John's research involves using particles of palladium more than 100,000 times smaller than the width of a hair to remove toxic gases, such as carbon monoxide and nitrous oxide, from dirty exhaust fumes, cheaply and more efficiently than existing methods.

"Palladium is currently used in car exhausts, but the systems are horribly inefficient. This research increases their efficiency so that car companies get the same or better results by using smaller amounts," says John.

This could pave the way for a cheaper and more effective way of removing pollution from our streets, and create a double win for the environment by reducing the need for palladium mining which is particularly harmful to the environment.

"The potential for commercialising this technology is huge. We've currently got a major British company, Johnson Matthey, a world leader in the supply of precious metals, studying our samples to determine their suitability for pollution control systems."

FACULTY OF GRADUATE RESEARCH

The Faculty of Graduate Research (FGR) was established in 2009 to administer and oversee all doctoral programmes at Victoria University.

The main doctoral programme at Victoria is the PhD, but the University also offers the Doctor of Musical Arts (DMA), run through the New Zealand School of Music, and a range of higher doctorates, post-experience awards based on published work.

For PhD candidates at Victoria, part of the FGR's role is to keep students and supervisors informed about the requirements of PhD study and to develop the policies that govern the degree. The aim of the FGR is to maintain effective, fair and equitable management of the candidature for postgraduate research degrees across the University.

Students carry out their research in the faculty that oversees their academic programme—Architecture and Design, Commerce and Administration, Education, Engineering, Humanities and Social Sciences, Law and Science. The FGR is a 'virtual' faculty that has oversight of PhD students in all these other faculties.

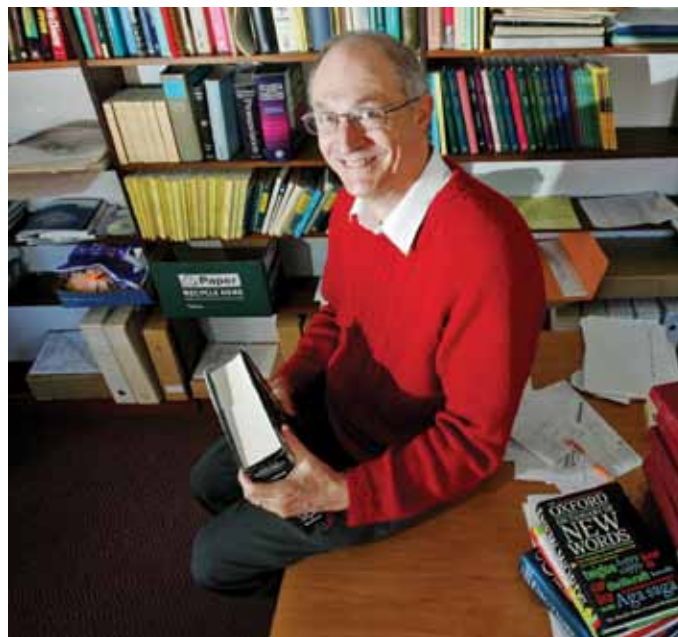
The FGR also provides an orientation to PhD study, and skills-development programmes for PhD candidates.

THE PhD DEGREE

The PhD involves three to four years of independent research under supervision leading to the production of a thesis not exceeding 100,000 words in length. The thesis is intended to make a significant or original contribution to knowledge or understanding in the field of the research. The supervisors and their students are attached to the University's schools or research centres.

New candidates for the PhD are 'provisionally registered' until their full proposal has been accepted by the school or centre to which they are attached. A full proposal sets out the plan for the thesis as a whole, frames the research questions against a background of a suitable literature review and indicates that any ethical or moral problems involved in the research have been properly considered by the candidate. It is expected that full registration is achieved within 12 months of first enrolling for the degree. Although coursework does not form an integral part of the PhD degree, you may be required or encouraged to undertake a limited amount of coursework during your period of provisional enrolment, to support you in preparing your full proposal.

If you are interested in applying for a PhD, you should consult the FGR website www.victoria.ac.nz/fgr where you will find the appropriate application form, guidelines on how to complete it and a great deal of other information aimed at current or intending PhD students. There are three application rounds each year and the complete application (including referees' reports) should reach the University by 1 March, 1 July or 1 November.



Laurie Bauer

PROFESSOR OF LINGUISTICS

DEAN OF THE FACULTY OF GRADUATE RESEARCH

The Dean of the Faculty of Graduate Research is Professor Laurie Bauer. Laurie received his PhD from the University of Edinburgh in 1975 and joined Victoria University in 1979. He holds a chair in Linguistics, and is known world-wide for his research into word-formation and international varieties of English. From 2010 he is the holder of a Marsden Fund research grant to work on a comprehensive description of the morphology of current English. His co-researchers in this project are Professor Rochelle Lieber from the University of New Hampshire (USA) and Professor Ingo Plag from the University of Siegen (Germany).

A MESSAGE FROM THE DEAN

Welcome to postgraduate study at Victoria University. Most of you reading this will be undertaking taught courses. You may have come directly from undergraduate courses, or be hoping to develop your position in your chosen career, or perhaps to retrain. Whichever situation you find yourself in, you will be asked to undertake a certain amount of research. Research is at the core of what the University does. The development of new ideas, new products, new processes is vital for the society of which we form a part, and it is the University's role to help develop new knowledge and then to pass it on. You are now part of that process. We hope you will find it as exciting as we do, and that you will choose to go on to further research, taking advantage of the opportunities that Victoria has to offer you.

Enjoy your study, and do think about moving on to even more research-intensive work at a later date.

POSTGRADUATE STUDY AND YOUR CAREER

As a successful postgraduate student at Victoria, you will join an international community of scholars and experts. During the course of your studies, you will learn much about your specialist field of knowledge, yourself, others and about the world around you. Postgraduate study is stimulating, challenging and intellectually rewarding.

Victoria graduates consistently enjoy one of the highest employment rates of graduates from any New Zealand university and are employed by many prestigious companies and businesses both in New Zealand and globally. Victoria graduates possess highly sought after qualities—they are focused, resourceful and forward thinking.

One of the best ways of gaining employment is establishing networks while you study.

Wellington offers wonderful employment opportunities in both the public and private sectors.

Graduate study is becoming increasingly important in a competitive market. For many professions it is essential to complete graduate training—for example, accounting, psychology and teaching. In many career areas postgraduate qualifications are necessary. For example:

- ▣ policy development and social science research positions, where a (minimum) Honours-level qualification is required
- ▣ market research and financial investment organisations, where a Master's degree is generally required
- ▣ most scientific research positions, where a Master's degree is required
- ▣ higher level analytical and research work.

The most recent New Zealand Vice-Chancellors' Committee survey of University Graduate Employment Destinations indicates that the highest salaries are paid to graduates who have completed postgraduate qualifications.

Career Development and Employment (Vic Careers) is available to assist you with seeing where your postgraduate qualification might take you. It also publicises many hundreds of jobs each year and holds on-campus careers fairs where organisations interact with future employees, and has extensive graduate recruitment programmes.

More information can be found at www.victoria.ac.nz/careers



JOANNA HESLOP

BA(HONS), MMUS, MSS

NGĀTI RUANUI

After graduating from Victoria with a Master of Music, Joanna Heslop became an opera singer and ended up living and working for three years in Russia. While singing was her first love, ultimately she decided to pursue a more practical and intellectually stimulating career.

Upon returning to New Zealand, Joanna was very keen to join the Ministry of Foreign Affairs and Trade (MFAT). When she visited the Victoria Postgraduate Liaison Officer to investigate options in Political Science and International Relations, mention was made of the Master of Strategic Studies. Joanna had never heard of strategic studies before, but was instantly attracted because it was a practical, intellectually challenging subject with broad interest and applicability.

Her research centred on ways of understanding how another culture might interpret the world and the impact that could have on the strategies they prefer. Strategic studies not only broadened Joanna's perspective, it also gave her the opportunity to meet people already working in public policy and was a real point of difference on her CV. She now works in the International Security and Disarmament Division at MFAT, and looks forward to a long and interesting career at home and abroad.

“Victoria gave me the education to embark on two entirely different careers, first as a musician, and now as a foreign policy officer. The School of Government really benefits from its close association with a number of government departments, ministries and agencies. For anyone interested in New Zealand public policy, Wellington can't be beaten as a place to study.”

FUNDING YOUR STUDY

Victoria University has established an international reputation for academic excellence in postgraduate study and research across all faculties. Qualifications awarded by Victoria are internationally recognised and transferable. Study is affordable and all PhD candidates pay only domestic fees. Victoria's strong research culture is reflected in its scholarships. Scholarships are available for Victoria PhD and Master's by thesis candidates in all disciplines and graduate awards are open to graduates of any university enrolling in Honours or coursework Master's programmes. Victoria's scholarships are available for both domestic and international students. A comprehensive list of scholarships available, and information about the application process, can be found at www.victoria.ac.nz/scholarships

VICTORIA PhD FUNDING

Scholarships are awarded to applicants applying to the PhD programme at Victoria on the basis of academic merit, research ability and, if relevant, a publication record. There is a single application form for PhD admission and scholarships and approximately 110 new PhD scholarships are offered each year across three rounds. Applicants to the PhD programme can be considered for two scholarships:

- ▣ **Victoria PhD Scholarships** currently provide an annual stipend of \$21,000 plus tuition fees for up to three years.
- ▣ **Victoria Doctoral Scholarships** currently provide an annual stipend of \$16,000 and tuition fees for up to three years plus the opportunity for employment valued at \$5,000 per annum in the school as a tutor or research assistant.

Closing dates for PhD admission and scholarships are **1 March, 1 July and 1 November**. Further information is available at www.victoria.ac.nz/fgr

- ▣ **PhD Submission Scholarships** are also available during the final three months of a PhD as an incentive to focus on writing up the research. These awards are valued at \$6,000.
- ▣ **Victoria Doctoral Completion Awards** are available on submission of the PhD thesis providing this is within 42 months of enrolment and are valued at up to \$6,000.

OTHER POSTGRADUATE SCHOLARSHIPS

Victoria Master's (by thesis) Scholarships are awarded to candidates on the basis of academic merit and the suitability of the research topic. They provide a stipend of \$15,000 and domestic tuition fees for one year and partial thesis expenses. Students must be undertaking a thesis of at least 90 points. The closing date is **1 November** each year.

Victoria Graduate Awards are open to students who will be enrolled full-time or part-time for an Honours or Master's degree taken via coursework, or a combination of coursework and a thesis/research project of less than 90 points. The closing date is **1 November** each year.

SCHOLARSHIP APPLICATION PROCESS

Scholarship application forms can be downloaded from the Scholarships Office website www.victoria.ac.nz/scholarships. Although you may apply for a scholarship before the documentation for your enrolment is complete, any offer of a scholarship depends upon gaining enrolment into your programme of study and admission to the University.

A full list of available postgraduate scholarships can be found in our comprehensive scholarships database (there is a link on the on the Scholarships Office website) which provides access to a wide range of funding including externally funded scholarships.

As scholarship values and closing dates may change at any time, applicants are advised to visit the scholarships website and read the regulations governing each award prior to application.

EMPLOYMENT DURING STUDY

If you hold a Victoria University scholarship there are limits on the number of hours you are entitled to be employed and you will need to check the scholarship regulations carefully. Employment at the University is more likely to be approved than employment elsewhere.

Postgraduate students are often employed as tutors, laboratory demonstrators, teaching or research assistants. This type of employment is a great opportunity to gain valuable professional and teaching experience while studying. However, it is important that you discuss your work commitments with your postgraduate coordinator or your supervisor to ensure you are able to balance your workload.

International students need to check their visa requirements regarding employment.

STUDENT LOANS AND ALLOWANCES

You may be eligible for a Student Loan or Allowance. These are available to New Zealand citizens, Australian citizens and New Zealand permanent residents who have held New Zealand residency for at least two years and are in full-time study in an approved programme, or part-time study for a minimum of 32 weeks per year.

Applications for loans should be made at least two months before study begins. Information about loans and allowances is available by contacting StudyLink on 0800 88 99 00 or from www.studylink.govt.nz

OVERVIEW OF GRADUATE AND POSTGRADUATE PROGRAMMES AT VICTORIA

GRADUATE CERTIFICATE

Graduate Certificates are one-trimester programmes (if full-time) open to graduates in any field and are usually nested within a Graduate Diploma programme (see below). Graduate Certificates are a convenient qualification for students who wish to undertake a limited amount of study in an area of interest at an advanced undergraduate level, either because it is relevant to their employment or interests or because they are considering subsequent application for further study.

GRADUATE DIPLOMA

Graduate Diplomas, which take one year of full-time study, enable students with a Bachelor's degree (or in some cases appropriate work experience) in one discipline to transition to postgraduate study in a new area. Alternatively they can provide a refresher course or a short programme of study in an area of interest. The diploma is an ideal opportunity to specialise at an advanced level in areas not included in your first degree or, if you have been away from study for a while, to learn about new developments in your original discipline.

Victoria offers Graduate Diplomas in arts, commerce and science, and a range of other more specialised programmes—for example, Museum and Heritage Studies (see page 26).

POSTGRADUATE CERTIFICATES

Postgraduate Certificates are designed to widen and deepen your knowledge and skills at postgraduate level through both taught courses and directed inquiry. They are a pathway to other postgraduate study options and can also provide professional development options within your area of interest. Postgraduate Certificates can typically be completed in six months full-time or up to two-years part-time.

POSTGRADUATE DIPLOMAS

Postgraduate Diplomas provide an alternative to Honours for graduates who wish to extend their knowledge and expertise in a subject area at postgraduate level. They usually take one year full-time or up to four years part-time—some may allow direct entry into a Master's degree.

HONOURS DEGREES

An Honours degree at Victoria is a stand-alone, one-year full-time programme of coursework, undertaken after completion of a Bachelor's degree.* An Honours year gives you the opportunity to further explore and develop areas of interest in your chosen field. It is a vital step in synthesising your ideas, developing your skills and preparing you for independence in your field whether in paid employment, further research or study or another aspect of your life. You will usually find there are fewer lectures than at undergraduate level and some of your classes are likely to be run by a student, who prepares and presents a seminar on a specified topic to the other members of the class.

Each Honours year is an individual, personal course of study, designed in consultation with staff from your school. It is important that you contact the relevant school as early as possible to discuss your plans. You may, with approval, substitute up to half of your programme with 400-level (graduate-level) courses from other programmes. This enables you to create a course of study that best matches your needs and interests.

Honours programmes begin in the first trimester (March), often with a core course introducing you to postgraduate study in the discipline. They are normally studied full-time over Victoria's first two trimesters (March-June and July-October), but may, with approval, be spread over two years. For more information, contact the relevant faculty student administration office (see page 39 for faculty contact details).

Admission to an Honours programme at Victoria normally requires a B+ grade average or better in the final-year undergraduate courses in the area you propose to specialise in for your programme. However, all applications are considered individually, and recognition can be given to appropriate academic or work experience. Students who complete an Honours degree to a satisfactory standard may be permitted to proceed to a Master's by thesis programme or provisional enrolment in a PhD.

** In some cases Honours is integrated into an undergraduate degree. The LLB(Hons), for example, is a separate degree which runs concurrently with the LLB for above-average students selected by the Faculty of Law during the course of undergraduate studies. Other examples are the Bachelors' degrees in architectural studies, science and technology and engineering. First-class Honours may be awarded if performance in the degree is of an exceptionally high standard.*

MASTER'S DEGREES

Victoria offers a variety of Master's degrees in more than 100 specialist subject areas. A Master's thesis must be completed within a minimum of nine months and a maximum of 18 months full-time and within a minimum of 18 months and a maximum of three years part-time. Master's degrees include a substantial research component in the form of a thesis—typically this takes two trimesters, but sometimes a full calendar year is required.

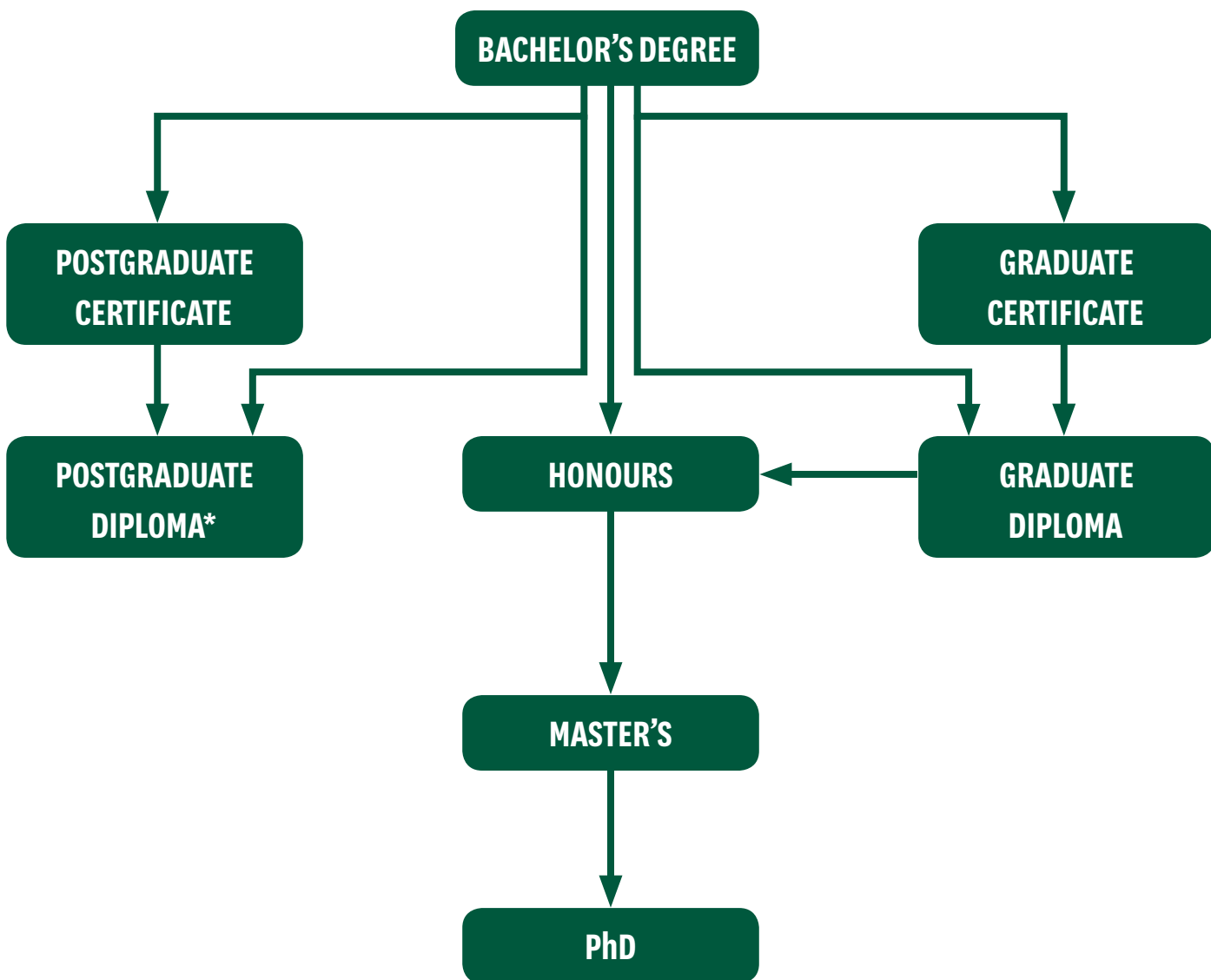
A Master's degree enables you to work independently, focusing on research, analysis and critical evaluation, with supervision from an expert in your field of interest.

A few Master's programmes are by coursework only (eg. Master of Business Administration) and others combine both courses and research options (Master of Education).

DOCTOR OF PHILOSOPHY (PhD)

The PhD thesis is a major piece of original research. Word length varies according to the nature of each project, but it should not exceed 100,000 words. According to the University's PhD Statute, a PhD thesis "demonstrates the candidate's ability to carry out independent research" and must also be "a significant contribution to the knowledge or understanding of a field of study". As well as intelligence and research aptitude, the degree requires considerable dedication and tenacity. However, like any challenging undertaking, the rewards are great.

The PhD is examined by thesis after a minimum of two years of supervised research at Victoria. However, PhD theses usually require at least three years. On completion, your thesis is assessed by three examiners, one from an overseas university. This is followed by an oral examination.



* Some postgraduate diploma courses can lead to Master's study. Contact the Postgraduate Liaison Officer at postgrad-enquiries@vuw.ac.nz

FACULTY OF ARCHITECTURE AND DESIGN

SCHOOL OF ARCHITECTURE SCHOOL OF DESIGN

FACULTY OF ARCHITECTURE AND DESIGN

139 Vivian Street, Te Aro Campus

PHONE 04-463 6200

FAX 04-463 6204

EMAIL architecture@vuw.ac.nz or
design@vuw.ac.nz

WEBSITE www.victoria.ac.nz/architecture or
www.victoria.ac.nz/design

The Faculty of Architecture and Design is a leading centre of design and architecture in New Zealand. We offer postgraduate programmes in a range of topics encompassing design and the built environment. These range from Graduate Diplomas to PhD-level qualifications that will lead you to develop critical views, to make connections and gain practical experience within a multi-disciplinary environment.

At the Faculty, new and exciting projects are being undertaken, boundaries are being pushed to the extreme and new graduates are emerging to become industry leaders on a national and international scale.

We have a dedicated team of academic staff, ready to supervise students across a large range of thesis topics and projects. Our academic staff are constantly working on new research initiatives to further develop their understanding and knowledge of current issues within their field and to ensure they are fully equipped to supervise students at postgraduate level.

The Faculty's facilities are widely acknowledged as some of the best in Australasia. Major items of equipment include a 3-digital printer, a digital laser cutter, a wind tunnel and other environmental simulation equipment. The Faculty has its own library, a construction workshop, a video production and editing suite (the largest in the country), photographic studios, computer laboratories with computer-aided design and animation software, and thermal, lighting and structural performance simulations.

RESEARCH CENTRE

- ☒ Centre for Building Performance Research
www.victoria.ac.nz/cbpr

RESEARCH STRENGTHS IN ARCHITECTURE

- ☒ Architectural and urban design processes
- ☒ Architectural history, theory and criticism
- ☒ Building economics, management and regulation
- ☒ Building performance and evaluation
- ☒ Building structures and construction
- ☒ Energy and environmental design and buildings, including sustainable design

RESEARCH STRENGTHS IN BUILDING SCIENCE

- ☒ Daylight productivity and health
- ☒ Digital craft in architecture
- ☒ Earthquakes and engineering in developing countries
- ☒ Fire engineering
- ☒ Seismic design of buildings

RESEARCH STRENGTHS IN DESIGN

- ☒ Design-led futures
- ☒ Gaming
- ☒ Interaction design
- ☒ Digital imaging
- ☒ Design history and theory
- ☒ Human factors in design research
- ☒ Design and culture

QUALIFICATION	DURATION (TRIMESTERS) IF STUDIED FULL-TIME	TRIMESTER START	TYPE OF PROGRAMME	ENTRY REQUIREMENTS	CLOSING DATE	DELIVERY METHOD
Graduate Certificate in Designed Environments	1-2	1 or 2	Coursework	Good Bachelor's degree or equivalent in Architecture, Building Science or Design	Standard trimester closing dates	On campus
Graduate Diploma in Designed Environments	2-3	1 or 2	Coursework	Good Bachelor's degree or equivalent in Architecture, Building Science or Design	Standard trimester closing dates	On campus
Postgraduate Diploma in Architecture History and Theory	2-3	1 or 2	Coursework	Good Bachelor's degree or equivalent in Architecture History and Theory	Standard trimester closing dates	On campus
Master of Architecture	3	1 or 2	Research	Good Bachelor's degree or Postgraduate Diploma in Architecture History and Theory or equivalent qualification and portfolio	Standard trimester closing dates	On campus
Postgraduate Diploma in Architecture	2-3	1 or 2	Coursework	Good Bachelor of Architectural Studies in Architecture or a Graduate Diploma in Designed Environments or equivalent in related discipline and portfolio	Standard trimester closing dates	On campus
Master of Architecture (Professional)	4	1	Coursework and research	Good Bachelor of Architectural Studies in Architecture or a Graduate Diploma in Designed Environments or equivalent in related discipline and portfolio	Standard trimester closing dates	On campus
Postgraduate Diploma in Interior Architecture	2-3	1 or 2	Coursework	Good Bachelor of Architectural Studies in Architecture or a Graduate Diploma in Designed Environments or equivalent in related discipline and portfolio	Standard trimester closing dates	On campus
Master of Interior Architecture	4	1	Coursework and research	Good Bachelor of Architectural Studies in Architecture or a Graduate Diploma in Designed Environments or equivalent in related discipline and portfolio	Standard trimester closing dates	On campus
Postgraduate Diploma in Landscape Architecture	2-3	1 or 2	Coursework	Good Bachelor of Architectural Studies in Architecture or a Graduate Diploma in Designed Environments or equivalent in related discipline and portfolio	Standard trimester closing dates	On campus
Master of Landscape Architecture	4	1	Coursework and research	Good Bachelor of Architectural Studies in Architecture or a Graduate Diploma in Designed Environments or equivalent in related discipline and portfolio	Standard trimester closing dates	On campus
Postgraduate Diploma in Building Science	2-3	1 or 2	Coursework	Good Bachelor's degree or equivalent Bachelor's degree with Honours in a related discipline	Standard trimester closing dates	On campus
Master of Building Science	5-6	1	Coursework and research	Good Bachelor's degree or equivalent Bachelor's degree with Honours in a related discipline	Standard trimester closing dates	On campus
Graduate Diploma in Design Innovation	2-3	1 or 2	Coursework	Good Bachelor's degree in a related discipline and portfolio	Standard trimester closing dates	On campus

QUALIFICATION	DURATION (TRIMESTERS) IF STUDIED FULL-TIME	TRIMESTER START	TYPE OF PROGRAMME	ENTRY REQUIREMENTS	CLOSING DATE	DELIVERY METHOD
Postgraduate Diploma in Design Innovation (not offered until 2012)	2-3	1 or 2	Coursework	Good Bachelor of Design Innovation or Graduate Diploma in Design Innovation or equivalent Bachelor's degree in related discipline— Culture+Context, Industrial Design or Media Design and portfolio	Standard trimester closing dates	On campus
Master of Design	3	Any	Research	Good Bachelor of Design degree or Bachelor of Design (Hons) or equivalent in related discipline	Standard trimester closing dates	On campus
Master of Design (Innovation) (not offered until 2012)	4	1	Coursework and research	Good Bachelor of Design Innovation or Graduate Diploma in Design Innovation or equivalent Bachelor's degree in related discipline— Culture+Context, Industrial Design or Media Design and portfolio	Standard trimester closing dates	On campus
PhD—Architecture or Design	6+	Any	Research	Honours or Master's preferably in relevant discipline	1 March, 1 July or 1 November	On campus



DAVID HAKARAIA MASTER OF DESIGN STUDENT

Ko David Hakaraia Tōku ingoa
 Ko Rakaumangamanga te maunga
 Ko Ipipiri te Moana
 Ko Te Rawhiti te Marae
 Ko Ngati Kuta me Patu Keha nga hapū
 Ko Ngapuhi-nui-tonu te Iwi

Along with two other Victoria students, David Hakaraia received a Creative New Zealand grant to design exhibition pieces based around what they believe might be a contemporary Māori lifestyle. Design and his Māori heritage are subjects about which David is deeply passionate and which have been a large part of his work both as an undergraduate and as a professional.

Currently working on his Master of Design in Industrial Design, David hopes to add to mātauranga Māori (Māori knowledge) by exploring new technologies available at the School of Design, which will allow him to express both himself and his culture.

“I believe that learning is a lifelong process—which is necessary for the evolution of my work—and there is no better place to do it than with like-minded people,” says David.

David is also the first Māori Master's student at the School of Design to come from Te Rōpū Āwhina, which was established in 1999. The focus of Āwhina is to produce Māori and Pacific scientists, technologists, engineers, architects and designers to contribute to Māori and Pacific development.

“Being part of Āwhina has taught me the importance of being a good role model for rangatahi (youth). The whānau support system is excellent as it allows students to share and create ideas and stories through design. It also gives me the chance to show students that they have an opportunity to be part of the built environment.”



FACULTY OF COMMERCE AND ADMINISTRATION

SCHOOL OF ACCOUNTING AND COMMERCIAL LAW

SCHOOL OF ECONOMICS AND FINANCE

SCHOOL OF GOVERNMENT

SCHOOL OF INFORMATION MANAGEMENT

SCHOOL OF MARKETING AND INTERNATIONAL BUSINESS

VICTORIA MANAGEMENT SCHOOL

FACULTY OF COMMERCE AND ADMINISTRATION

Level 1, Railway West Wing, Pipitea Campus

PHONE 04-463 5751

FAX 04-463 5360

EMAIL fca-sao@vuw.ac.nz

WEBSITE www.victoria.ac.nz/fca

Victoria's Faculty of Commerce and Administration offers a broad range of graduate and postgraduate programmes that cater to the needs of the commercial, financial, administrative and academic worlds. Faculty programmes include modular courses for working managers, Graduate Certificates and Diplomas, Master's degrees for a variety of learning needs and situations, and PhDs.

The Faculty is superbly positioned to make the most of the many advantages of being close to the centre of a thriving capital city. Wellington is the administrative and financial centre of New Zealand, and many businesses have their head offices here. Excellent links are in place with many of the corporate leaders, financial institutions and government agencies in mutually beneficial partnerships.

Evidence of our teaching quality is borne out by the University's MBA programme recently being awarded international accreditation by the Association of MBAs (AMBA), the impartial international authority on postgraduate business education, which sets the global standard for all MBA programmes. AMBA accreditation represents the highest standard of achievement in postgraduate business education and is earned only by the best programmes.

As one of our graduate students, you will be learning from top-level staff, many of whom have strong international profiles and are involved in research projects of national and international significance.

RESEARCH CENTRES

- ☒ Centre for Accounting, Governance and Taxation Research
www.victoria.ac.nz/sacl/cagtr
- ☒ Centre for Strategic Studies
www.victoria.ac.nz/css
- ☒ Industrial Relations Centre
www.victoria.ac.nz/vms/researchcentres/industrial_relations_centre.aspx
- ☒ Institute of Policy Studies
www.ips.ac.nz
- ☒ Health Services Research Centre
www.victoria.ac.nz/hsrc
- ☒ New Zealand Institute for the Study of Competition Regulation
www.iscr.org.nz
- ☒ New Zealand Climate Change Research Institute
www.victoria.ac.nz/climate-change/

RESEARCH STRENGTHS

- ☒ Accounting history
- ☒ Communications
- ☒ Competitive advantage
- ☒ Customer relationship management
- ☒ Developing human capability
- ☒ Distribution channels
- ☒ E-Commerce
- ☒ E-Government
- ☒ Economic history
- ☒ Exchange rate dynamics
- ☒ Financial incentives
- ☒ Financial reporting and governance
- ☒ Information systems
- ☒ Innovation in New Zealand tourism
- ☒ Library and information management
- ☒ Local government strategic policy planning
- ☒ Macroeconomics with market frictions
- ☒ Monetary policy
- ☒ Public sector and not-for-profit
- ☒ Services marketing—retailing in the domestic/international environment
- ☒ Social and environmental accounting
- ☒ Taxation

QUALIFICATION	DURATION (TRIMESTERS) IF STUDIED FULL-TIME	TRIMESTER START	TYPE OF PROGRAMME	ENTRY REQUIREMENTS	CLOSING DATE	DELIVERY METHOD
Graduate Certificate or Diploma in Commerce ¹	Certificate—1 Diploma—2*	Any	Coursework	Any Bachelor's degree	10 January	On campus (although some individual courses may be available online)
Bachelor of Commerce and Administration (Hons) ²	2	1	Coursework	BCA	31 January	On campus
Master of Commerce and Administration ³	2	Any	Research	BCA(Hons)	31 January	On campus
Bachelor of Tourism Management (Hons)	2	1	Coursework and research	BTM	31 January	On campus
Master of Tourism Management	5	1	Coursework and research	BTM or BTM(Hons)	31 January	On campus
Master of Management Studies	3-4	1	Coursework and research	Any Bachelor's degree	31 January	On campus
Certificate of Management Studies	2 (part-time)	1	Coursework	Three years' professional work experience	10 December	On campus— evening classes
Postgraduate Diploma in Business Administration	4 (part-time)	1	Coursework	Undergraduate degree and three years' work experience or extensive work experience	10 December	On campus— evening classes
Postgraduate Diploma in Human Resource Management	4 (part-time)	1	Coursework	Undergraduate degree and three years' work experience or extensive work experience	10 December	On campus— evening classes
Postgraduate Diploma in Marketing	4 (part-time)	1	Coursework	Undergraduate degree and three years' work experience or extensive work experience	10 December	On campus— evening classes
Master of Business Administration	4	1	Coursework	Undergraduate degree and five years' work experience or extensive work experience	December of previous year	On campus— evening classes
Postgraduate Certificate in Information Studies	1	1	Coursework	Any Bachelor's degree	Four weeks prior to Trimester One commencing	On campus or online
Postgraduate Diploma in Information Studies	2	1	Coursework	Any Bachelor's degree	Four weeks prior to Trimester One commencing	On campus or online
Master of Information Studies	3-4	1	Coursework and research	Any Honours degree	Four weeks prior to Trimester One commencing	On campus or online
Postgraduate Certificate in Information Management	2	1 or 2	Coursework	Undergraduate degree and five years' work experience or extensive work experience	Four weeks prior to trimester commencing	On campus— evening classes
Postgraduate Diploma in Information Management	2	1 or 2	Coursework	Undergraduate degree and five years' work experience or extensive work experience	Four weeks prior to trimester commencing	On campus— evening classes

¹ Accounting, Commercial Law, Economics, E-Commerce, Finance, Human Resource Management and Industrial Relations, Information Systems, International Business, Management, Māori Business, Marketing, Public Management, Public Policy, Taxation, Tourism Management.

² Accounting, Economics, Finance, Human Resource Management and Industrial Relations, Information Systems, International Business, Management, Marketing, Public Policy.

³ Master of Commerce and Administration (Accounting, Economics, Finance, Human Resource Management and Industrial Relations, Information Systems, International Business, Management, Marketing, Public Policy).

* Graduate Diploma in Accounting or Taxation may take longer than two trimesters.

QUALIFICATION	DURATION (TRIMESTERS) IF STUDIED FULL-TIME	TRIMESTER START	TYPE OF PROGRAMME	ENTRY REQUIREMENTS	CLOSING DATE	DELIVERY METHOD
Master of Information Management	3-4	1	Coursework and research	Undergraduate degree and five years' work experience or extensive work experience	Four weeks prior to Trimester One commencing	On campus— evening classes
Postgraduate Certificate in Public Policy	2 (part-time)	1 or 2	Coursework	Undergraduate degree and two years' work experience or extensive work experience	1/3—31 January** 2/3—13 June**	On campus— modular format
Postgraduate Diploma in Public Policy	2	1 or 2	Coursework	Undergraduate degree and two years' work experience or extensive work experience	1/3—31 January 2/3—13 June	On campus— modular format
Master of Public Policy	3-4	1 or 2	Coursework	Undergraduate degree and two years' work experience or extensive work experience	1/3—31 January 2/3—13 June	On campus— modular format
Postgraduate Certificate in Public Management	2 (part-time)	1 or 2	Coursework	Undergraduate degree and two years' work experience or extensive work experience	1/3—31 January 2/3—13 June	On campus— modular format
Postgraduate Diploma in Public Management	2	1 or 2	Coursework	Undergraduate degree and two years' work experience or extensive work experience	1/3—31 January 2/3—13 June	On campus— modular format
Master of Public Management	3-4	1 or 2	Coursework	Undergraduate degree and two years' work experience or extensive work experience	1/3—31 January 2/3—13 June	On campus— modular format
Postgraduate Certificate in Strategic Studies	2 (part-time)	1 or 2	Coursework	Undergraduate degree and two years' work experience or extensive work experience	1/3—31 January 2/3—13 June	On campus— modular format
Postgraduate Diploma in Strategic Studies	2	1 or 2	Coursework	Undergraduate degree and two years' work experience or extensive work experience	1/3—31 January 2/3—13 June	On campus— modular format
Master of Strategic Studies	3-4	1 or 2	Coursework	Undergraduate degree and two years' work experience or extensive work experience	1/3—31 January 2/3—13 June	On campus— modular format
Postgraduate Diploma in Financial Analysis	2	1 or 2	Coursework	Undergraduate degree or extensive work experience	10 December	On campus— modular format
Postgraduate Diploma in Treasury Management	2	1 or 2	Coursework	Undergraduate degree or extensive work experience	10 December	On campus— modular format
Master of Applied Finance	3	1 or 2	Coursework	Undergraduate degree and two years' work experience or extensive work experience	10 December	On campus— modular format
Graduate Diploma in Professional Accounting	2	Any	Coursework	BCA in Accounting	31 January	On campus
Postgraduate Certificate/Diploma in Professional Accounting*	Certificate—1 Diploma—2	1 or 3	Coursework	Any Bachelor's degree	31 January	On campus
Master of Professional Accounting	4	1 or 3	Coursework	Any Bachelor's degree	31 January	On campus
PhD—Commerce and Administration	6+	Any	Research	Honours or Master's degree preferably in a commerce discipline	1 March, 1 July or 1 November	On campus

* These courses are exit options for the Master of Professional Accounting only.

** 1/3 is the first trimester; 2/3 is the second trimester.



YOGESH PATEL

FIFTH-YEAR BCA(HONS)/LLB STUDENT

An eye to the future and a passion for argument and persuasion led Palmerston North-raised Yogesh Patel to study international business and law at Victoria.

After completing his Bachelor of Commerce, Yogesh chose to study international business at Honours level to position him for a career in the legal or management sphere. Yogesh has already had summer work with accountants PricewaterhouseCoopers and legal firm Russell McVeagh. He believes New Zealand businesses need to remain commercially savvy on an international level to continue leveraging their competitive advantages successfully.

And what better place to study than Wellington, which has the appeal of a bigger city while being compact, accessible and alive. It is an ideal place to study commerce and law with its proximity to Parliament, government departments and commercial firms.

Already the recipient of several scholarships and awards, including the University's Graduate Award and Academic Excellence Scholarship, Yogesh is also an active member of the university community. He has participated in numerous debating championships through Australasia and further afield, coaches debating, is Treasurer of the University's Debating Society and acts as Vice-President of the Law Students' Society. He also mentors first-year law students and tutors a 100-level commerce course and 200-level course in international business.

The programme has lived up to his expectations, in particular the relevance of the courses, and lecturers who are leaders in their fields and who are committed to ensuring students achieve to the highest standards. Add to that the friendly competition between fellow students, and it seems Yogesh has well and truly found his niche.



FACULTY OF EDUCATION

SCHOOL OF EDUCATIONAL PSYCHOLOGY AND PEDAGOGY SCHOOL OF EDUCATION POLICY AND IMPLEMENTATION TE KURA MĀORI

FACULTY OF EDUCATION

12 Donald Street, Karori Campus

PHONE 04-463 9500

FAX 04-463 9649

EMAIL pgeducation@vuw.ac.nz

WEBSITE www.victoria.ac.nz/education/qualifications/postgraduate

The Faculty of Education provides comprehensive graduate and postgraduate programmes that bridge scholarship, research and professional practice. It is possible to complete a postgraduate qualification as an online or campus-based student, or by completing courses in blocks. The Faculty of Education offers Doctoral, Master's and Honours programmes as well as Graduate and Postgraduate Diplomas and Certificates. The establishment of the Jessie Hetherington Centre for Educational Research creates the potential for significant and strategic educational research and development activities. The Centre focuses on research and development to enhance theoretical and evidence-based educational policy and practice from early childhood to higher education nationally and internationally.

RESEARCH CENTRES

- ☒ Jessie Hetherington Educational Research Centre
www.victoria.ac.nz/education/institutes/jher/jher.aspx
- ☒ Institute of Early Childhood Studies
www.victoria.ac.nz/education/institutes/iecs/iecs.aspx
- ☒ He Pārekereke
www.victoria.ac.nz/education/institutes/hp/hp.aspx

RESEARCH STRENGTHS

- ☒ Culturally responsive strategies
- ☒ Discourse education
- ☒ Educational policy and implementation studies
- ☒ Effective intervention for special needs
- ☒ Effective strategies for diversity
- ☒ E-learning including Māori medium
- ☒ Global-mindedness and citizenship
- ☒ Indigenous education and kaupapa Māori research
- ☒ Māori knowledge and development
- ☒ Motivation for learning
- ☒ Numeracy and mathematics education
- ☒ Research on teaching and learning



ANNA JOSKIN

PHD STUDENT

Anna Joskin came to Victoria University in 2008 from the University of Papua New Guinea (PNG) where she was a lecturer in communication skills.

Anna's PhD research aims to improve secondary school education in PNG by describing and evaluating the implementation process of an innovative, outcomes-based curriculum in two urban secondary schools. She has used Vygotsky's socio-cultural framework to propose a model of curriculum innovation in the Melanesian context.

Anna is motivated by the prospect of change that her research presents: "My thesis is an exploratory case study, so it will be instrumental in future education research in my country."

An NZAID Scholarship recipient, Anna says studying at Victoria has provided her with a network of like-minded people, helped her develop her research skills, given her the opportunities to learn about and meet people from other cultures and to spread awareness of her own home country.

She chose to study at Victoria after being convinced by two of her colleagues and good friends in PNG who are both Victoria alumni: "I had the opportunity to go elsewhere but opted for Victoria as I valued the judgements of my two colleague friends."

Anna says her plans for the future include "to return to PNG after the completion of my studies and to serve my country with the new skills and knowledge that I've acquired here in New Zealand."

QUALIFICATION	DURATION (TRIMESTERS)	TRIMESTER START	TYPE OF PROGRAMME	ENTRY REQUIREMENTS	CLOSING DATE	DELIVERY METHOD
Graduate Diploma of Teaching (ECE)	One calendar year	January	Coursework and teaching experience	Undergraduate degree or primary teaching qualification. Limited entry based on assessment exercise and academic merit.	10 December	On campus or online
Graduate Diploma of Teaching (Primary)	One calendar year	January	Coursework and teaching experience	Any undergraduate degree. Limited entry based on assessment exercise and academic merit.	10 December	On campus or online
Graduate Diploma of Teaching (Secondary)	One calendar year	January	Coursework and teaching experience	Undergraduate degree which includes two teaching subjects— one studied to 200 level and one to 300 level. Limited entry based on assessment exercise and academic merit. Teach NZ scholarships are available for some subjects.	10 December	On campus or online
Graduate Diploma of Teaching (Adult Literacy and Numeracy)	2	1	Coursework and teaching experience	Undergraduate degree, a teaching qualification or equivalent professional experience such as working in tertiary education/ training. Fees assistance may be available from the Ministry of Education.	10 January	On campus— modular
Bachelor of Arts (Honours) Education	2	1 or 2	Coursework	Bachelor of Arts majoring in Education.	10 January	On campus
Bachelor of Arts (Honours) Gender and Women's Studies*	2	1 or 2	Coursework	Bachelor of Arts majoring in Gender and Women's Studies.	10 January	On campus
Master of Arts in Education*	3	Any	Research	BA(Hons) in Education with first or second class Honours.	TBA	On campus
Master of Arts in Gender and Women's Studies*	3	Any	Research	BA(Hons) in Gender and Women's Studies with first or second class Honours.	TBA	On campus
Postgraduate Certificate or Diploma in Education and Professional Development	Certificate—1 Diploma—2	Any	Coursework	BA majoring in Education, Bachelor of Education (or similar teaching qualification), undergraduate degree and either a Diploma of Teaching or appropriate educational experience, Advanced Diploma of Teaching or (without an undergraduate degree) extensive practical, professional or scholarly experience.	TBA	On campus or online
Master of Education	5	Any	Thesis	Subject to final approval from 2011—Postgraduate Diploma in Education and Professional Development. Contact the Faculty of Education Postgraduate Office for further information.	TBA	On campus or online
PhD—Education/ Gender and Women's Studies	6	Any	Research	Honours or Master's degree preferably in a relevant discipline.	1 March, 1 July or 1 November	On campus

* This programme is currently under review. Please contact the Faculty of Education Postgraduate Office for further information.

FACULTY OF ENGINEERING

SCHOOL OF ENGINEERING AND COMPUTER SCIENCE

FACULTY OF ENGINEERING

Cotton Building, Kelburn Campus

PHONE 04-463 5101

FAX 04-463 5122

EMAIL engineering@vuw.ac.nz

WEBSITE www.victoria.ac.nz/engineering

Engineering is the newest faculty at Victoria. Established in 2007, Victoria's engineering programme is focused on our digital world—we use electronics and software as our essential tools to produce products such as robots, sensors, mobile communication systems, games and more. Our research uses new materials to design and build better products, develops new ways to interact with ICT systems, improves the security of our communication systems, builds more reliable software, develops new ways to process, mines and visualises data and much more.

The Faculty offers a full suite of engineering degrees, the BE, ME and PhD, with programmes in Electronic and Computer System Engineering, Network Engineering and Software Engineering and the Computer Science programme in the Faculty of Science (see Faculty of Science on pages 30 to 32). The Faculty is housed in new laboratories and facilities in the Cotton and Alan MacDiarmid Buildings where our research is supported by sophisticated, cutting-edge equipment including the ability to run simulations on the University of Canterbury Blue Gene supercomputer, and our own extensive grid computing initiative.

RESEARCH STRENGTHS

- ☒ Artificial intelligence
- ☒ Communications and signal processing
- ☒ Computer science
- ☒ Electronic and computer system engineering
- ☒ Electronics and mechatronics
- ☒ ELVIS—software engineering
- ☒ Evolutionary computation
- ☒ Network engineering
- ☒ Software engineering



CRAIG ANSLOW

PHD STUDENT IN SOFTWARE ENGINEERING

When Craig was at school in the 1990s there was no Facebook or Google—even cellphones were rare amongst secondary school students. Before going to university, Craig travelled overseas and it was in Europe that he decided to go into computer science.

“International travel exposed me to the impact that computer technology was having on everything we do, from booking flights to getting money out of the bank. Computers were everywhere, so it seemed like a good time to learn about them.”

He found his first year very challenging and “didn't quite get the big picture of computer programming”. This changed at the end of the first trimester: “I had to make a stick figure walk across the screen by giving it a set of instructions. Initially I was not very good at it, but I was just so excited that I had made it work.”

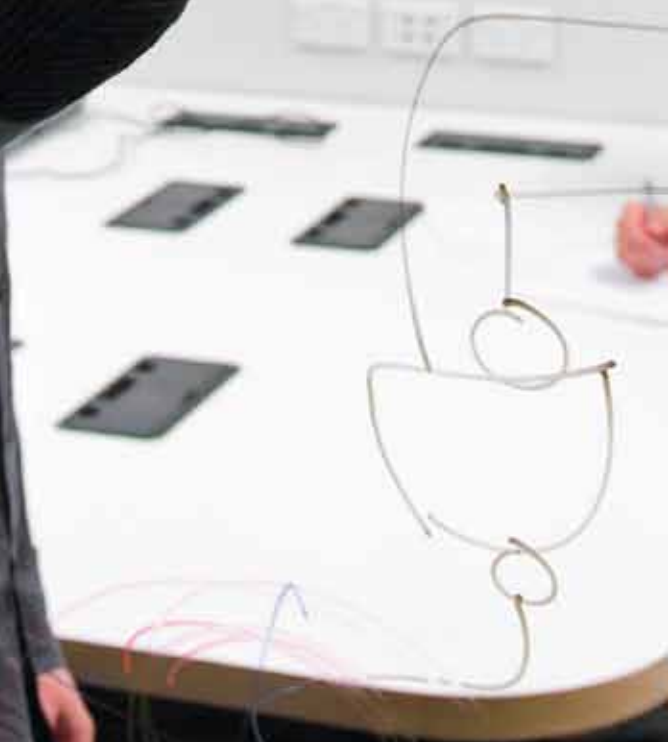
Craig has come a long way since the walking stick figure and is now completing his PhD, researching how software visualisation techniques can be applied with multi-touch tables: “There are established ways of building the hardware for multi-touch tables. I'm exploring the new multi-touch user interface paradigm in regard to software visualisation—if we take away a mouse and keyboard how can people interact with the technology? What is exciting about multi-touch tables is that they enable many people to interact and collaborate together at the same time rather than in isolation.”

QUALIFICATION	DURATION (TRIMESTERS)	TRIMESTER START	TYPE OF PROGRAMME	ENTRY REQUIREMENTS	CLOSING DATE	DELIVERY METHOD
Master of Engineering	2	Any	Coursework and research or research	BE	Standard trimester closing dates	On campus
PhD—Engineering	6+	Any	Research	Honours or Master's degree in a relevant discipline	1 March, 1 July or 1 November	On campus

int where $f \leq 0$
int where $f \geq 0$

return (int) x
return (int) x

$f \leq 0$
 $x \leq 0$
return



FACULTY OF HUMANITIES AND SOCIAL SCIENCES

SCHOOL OF ART HISTORY, CLASSICS
AND RELIGIOUS STUDIES
SCHOOL OF ENGLISH, FILM, THEATRE,
AND MEDIA STUDIES
GRADUATE SCHOOL OF NURSING, MIDWIFERY
AND HEALTH
SCHOOL OF HISTORY, PHILOSOPHY, POLITICAL SCIENCE
AND INTERNATIONAL RELATIONS
SCHOOL OF LANGUAGES AND CULTURES
SCHOOL OF LINGUISTICS
AND APPLIED LANGUAGE STUDIES
SCHOOL OF SOCIAL AND CULTURAL STUDIES
TE KAWA A MĀUI—SCHOOL OF MĀORI STUDIES
VA'AOMANŪ PASIFIKA
NEW ZEALAND SCHOOL OF MUSIC

FACULTY OF HUMANITIES AND SOCIAL SCIENCES

Level 4, Murphy Building, Kelburn Campus

PHONE 04-463 5745

FAX 04-463 5183

EMAIL fhss-enquiries@vuw.ac.nz

WEBSITE www.victoria.ac.nz/fhss

The Faculty is the largest at Victoria and offers one of the widest ranges of humanities and social science subjects in New Zealand including cultural anthropology, art history, Māori studies, media studies, museum and heritage studies, New Zealand studies, Pacific studies, political science, criminology, media studies, theatre and film. Victoria also has a wide range of languages available at postgraduate level. Teaching in all subjects is informed by the research undertaken by Victoria University academics.

Research institutes and centres, including the Crime and Justice Research Centre and the International Institute of Modern Letters, further strengthen the research culture of the Faculty. Many graduates continue with research-based postgraduate studies, and recent graduates have received scholarships to study in Harvard, Cambridge, Princeton, Johns Hopkins and UCLA.

Many of the Faculty's programmes have connections in Wellington which create opportunities for students to engage in during their studies. These include the Museum of New Zealand Te Papa Tongarewa, Archives New Zealand, Parliament, government agencies, New Zealand Film Archive and professional and amateur theatre.

The Faculty offers Bachelor of Arts (Honours) programmes and Master of Arts programmes in a range of subject areas. Research is the primary focus of all but a few Master's programmes, with most being by thesis only. It also offers a variety of specialised Graduate and Postgraduate Diplomas and Certificates; for example, the Graduate Diploma in Museum and Heritage Studies and the Graduate Certificate in Teachers of English to Speakers of Other Languages (TESOL). In addition, the Faculty offers several specialist Master's programmes, as well as supervision for research at the PhD or doctoral level in almost all areas of the Faculty.

Victoria and Massey Universities combined strengths in 2006 to establish the New Zealand School of Music (NZSM). The specialist music programmes formerly offered by the two universities are now jointly awarded as NZSM qualifications. Honours, Master's and PhD programmes are offered as well as New Zealand's only music therapy degree.

RESEARCH CENTRES, UNITS AND INSTITUTES

- ▣ Asian Studies Institute
www.victoria.ac.nz/asianstudies
- ▣ Crime and Justice Research Centre
www.victoria.ac.nz/cjrc
- ▣ Deaf Studies Research Unit
www.victoria.ac.nz/dsru
- ▣ English Language Institute
www.victoria.ac.nz/eli
- ▣ International Institute of Modern Letters
www.victoria.ac.nz/modernletters
- ▣ New Zealand Dictionary Centre
www.victoria.ac.nz/nzdc
- ▣ Stout Research Centre for New Zealand Studies
www.victoria.ac.nz/stout-centre
- ▣ Treaty of Waitangi Research Unit
www.victoria.ac.nz/stout-centre/research-units/towru
- ▣ Wai-te-ata Press
www.victoria.ac.nz/wtappress

RESEARCH STRENGTHS

- ▣ Asian development
- ▣ Comparative history
- ▣ Deaf learners
- ▣ Domestic violence
- ▣ Electoral systems
- ▣ Japanese tourism in New Zealand
- ▣ Language in society
- ▣ Language in the workplace
- ▣ Māori words in New Zealand English
- ▣ New Zealand print and culture
- ▣ New Zealand sign language
- ▣ Prostitution reform
- ▣ Rural New Zealand English
- ▣ Scottish migration to New Zealand
- ▣ Second language learning
- ▣ Sexuality studies
- ▣ Treaty of Waitangi
- ▣ Youth and family
- ▣ Youth offending



MARTIN FISHER

PHD STUDENT

STOUT RESEARCH CENTRE

Martin Fisher was born in Budapest, Hungary, and has lived in Italy, Canada and New Zealand. In 2007 Martin completed his Master of Arts (History) at McGill University in Montreal, before moving back to Wellington to begin his PhD in History at Victoria. In 2008 he was awarded a Vice-Chancellor's Strategic Scholarship.

Martin's doctoral research began by attempting to address the Treaty of Waitangi settlement process from an international perspective. While there had been some minor influences in general process between Canada and New Zealand especially, Martin has found that settlement processes in each country have developed more as a result of local forces rather than international influences.

Martin's focus has thus shifted to a study of the history of the two major pioneering settlements negotiated between the Crown, Waikato-Tainui and Ngāi Tahu during the late 1980s and 1990s. Internal deliberation by the Crown and pressures from different government agencies such as the Office of Treaty Settlements, the Department of Conservation, Treasury and Te Puni Kōkiri, as well as the concerns of third-party interests, and the dynamic between different iwi, hapū and other Māori groups in their negotiations with the Crown played by far the most important roles in the development of Treaty settlement processes.

QUALIFICATION	DURATION (TRIMESTERS)	TRIMESTER START	TYPE OF PROGRAMME	ENTRY REQUIREMENTS	CLOSING DATE	DELIVERY METHOD
Graduate Certificate in TESOL (12 students only)	1	3	Coursework	Bachelor's degree	10 September	On campus
Graduate Diploma in Arts (available in any BA major subject)	2	Any	Coursework	Bachelor's degree	10 January	On campus. Some individual courses may be available online.
Postgraduate Diploma in Arts* ¹	2	Any	Coursework	Bachelor's degree and any course prerequisites	10 January	On campus
Bachelor of Arts (Hons) ²	2	1	Coursework	Bachelor's degree or equivalent in the same subject area with normally a B grade average	10 January	On campus
Master of Arts ³	3	Any	Research	BA(Hons)	Anytime	On campus
Master of International Relations	3	1	Coursework and research	Honours degree or extensive practical, professional or scholarly experience	10 December	On campus
Master of New Zealand Studies	3	1	Coursework and research	Honours degree or extensive practical, professional or scholarly experience	10 January	On campus
Master of Theatre Arts (seven students only)	4	1	Coursework and portfolio/interview process	Bachelor's degree in performing arts or extensive practical, professional or scholarly experience	31 October	On campus
Graduate Certificate in Museum and Heritage Studies	1	1	Coursework and practicum	Bachelor's degree or extensive professional experience	10 December	On campus
Graduate Diploma in Museum and Heritage Studies	2	1	Coursework and practicum	Bachelor's degree or extensive professional experience	10 December	On campus
Master of Museum and Heritage Studies	4	1	Coursework and practicum	Bachelor's degree or extensive professional experience	10 December	On campus
Postgraduate Certificate in Health Care*	1	1 or 2	Coursework	Bachelor's degree in a health-related discipline and professional work experience in health care	10 January	On campus/ distance
Postgraduate Certificate in Nursing Science*	1	1 or 2	Coursework	Bachelor's degree or equivalent; Registered Nurse with a current practising certificate from the Nursing Council of New Zealand	10 January	On campus/ distance
Postgraduate Diploma in Health Care*	2	1 or 2	Coursework	Bachelor's degree in a health-related discipline and professional work experience in health care	10 January	On campus/ distance
Postgraduate Diploma in Nursing Science*	2	1 or 2	Coursework	Bachelor's degree or equivalent; Registered Nurse with a current practising certificate from the Nursing Council of New Zealand	10 January	On campus/ distance
Master of Health Care*	4	1 or 2	Coursework, or coursework and research	Bachelor's degree or equivalent in a health-related discipline and professional working experience in health care	10 January	On campus/ distance
Master of Nursing Science*	4	1 or 2	Coursework, or coursework and research	Bachelor's degree or equivalent; Registered Nurse with a current practising certificate from the Nursing Council of New Zealand	10 January	On campus/ distance
PhD—Humanities and Social Sciences	6+	Any	Research	First- or second-class Honours or Master's degree in a relevant discipline	1 March, 1 July or 1 November	On campus

Note: Some courses available for these programmes may be limited entry and have earlier closing dates.

For details, see www.victoria.ac.nz/home/admisenrol/enrol/limited.aspx

NEW ZEALAND SCHOOL OF MUSIC

QUALIFICATION	DURATION (TRIMESTERS)	TRIMESTER START	TYPE OF PROGRAMME	ENTRY REQUIREMENTS	CLOSING DATE	DELIVERY METHOD
Graduate Diploma in Music	2	1 or 2	Coursework	Undergraduate degree and audition (where applicable)	10 January	On campus
Bachelor of Music (Hons) ⁴	2	1	Coursework	BMus and audition or portfolio (where applicable)	10 January	On campus
Master of Music (Composition, Musicology, Performance)	2-3	Any	100 percent research or 75 percent research and 25 percent coursework	BMus(Hons) and audition (where applicable)	Anytime (10 January for coursework component)	On campus
Master of Music Therapy	4	1	Coursework, practicum and dissertation	Relevant undergraduate degree and some study in psychology or other social science, and audition	10 January	On campus
Postgraduate Diploma of Music (Composition/Sonic Arts, Performance)	2	1 or 2	Coursework	BMus + audition (where applicable)	10 January	On campus
Master of Musical Arts (Composition/Sonic Arts, Performance)	2-3	1	Coursework and research	BMus(Hons) or PGDipMus and audition/portfolio (where applicable)	10 January	On campus
Artists Diploma	4	1 or 2	Coursework and research	MMus in Performance or equivalent	10 January	On campus
Doctor of Musical Arts	6+	Any	Coursework and research	MMus or MMA and audition/portfolio	1 March, 1 July or 1 November	On campus
PhD—Music	6+	Any	Research	Honours or Master's degree in a relevant discipline	1 March, 1 July or 1 November	On campus

*Subject to approval

- ¹ Art History, Asian Studies, Chinese, Classical Studies, Criminology, Cultural Anthropology, Economics, Education, English (Literature), Film, French, Geography, German, Greek, History, International Relations, Italian, Japanese, Latin, Linguistics, Māori Studies, Mathematics, Media Studies, Music, Pacific Studies, Philosophy, Political Science, Psychology, Religious Studies, Social Policy, Sociology, Spanish, Theatre.
- ² Art History, Asian Studies, Chinese, Classical Studies, Criminology, Cultural Anthropology, Economics, Education, English, Film, French, Gender and Women's Studies, Geography, German, Greek, History, International Relations, Italian, Japanese, Latin, Linguistics, Logic, Logic and Computation, Māori Studies, Mathematics, Media Studies, Pacific Studies, Philosophy, Political Science, Psychology, Public Policy, Religious Studies, Sociology, Spanish, Theatre.
- ³ Applied Linguistics, Art History, Asian Studies, Chinese, Classical Studies, Classics, Communications, Creative Writing, Criminology, Cultural Anthropology, Economics, Education, English, Film, French, Geography, German, History, International Relations, Italian, Japanese, Library and Information Studies, Linguistics, Literary Translation Studies, Logic, Logic and Computation, Māori Studies, Mathematics, Mathematics Education, Media Studies, Modern Language Studies, Museum and Heritage Studies, New Zealand Literature, New Zealand Studies, Pacific Studies, Philosophy, Political Science, Psychology, Public Policy, Religious Studies, Social Policy, Sociology, Spanish, TESOL, Theatre.
- ⁴ Classical Performance, Composition/Sonic Arts, Ethnomusicology, Jazz Performance, Musicology, Music Studies and Arranging.

Note: Some courses available for these programmes may be limited entry and have earlier closing dates. For details, see www.victoria.ac.nz/home/admisenrol/enrol/limited.aspx

FACULTY OF LAW

FACULTY OF LAW

Government Buildings, Pipitea Campus

PHONE 04-463 6366

FAX 04-463 6365

EMAIL law-enquiries@vuw.ac.nz

WEBSITE www.victoria.ac.nz/law

Postgraduate study in law at Victoria is structured to meet the different needs of its students. These include young lawyers seeking professional development, recent graduates wishing to enrich their undergraduate degrees and academically-oriented students looking for a learning environment of quality.

For example, the option of part-time study for a Master of Laws suits many young graduates as a means of enhancing their technical and professional competence for career development.

The postgraduate programme is underpinned by the excellence of Victoria's legal academics, many of whom are nationally and internationally recognised in their fields and active in research and publication. In 2009 alone, Professor Campbell McLachlan QC wrote *Lis Pendens in International Litigation*, (Martinus Nijhoff Publishers), Professor Bill Atkin edited *The International Survey of Family Law* (2009 edition) and Senior Lecturer Meredith Kolsky Lewis co-authored *International Business Law*.

Victoria's Faculty of Law has a strong reputation for research-led teaching in its Master of Laws by coursework programme. Experienced academics individually supervise thesis and dissertation research, which is an ideal study option for researching a topic that is relevant to your work or interest.

One of this country's largest ever legal research projects, The Legal Māori Project, is being led by Senior Lecturer Māmari Stephens while a 2010 New Zealand Law Foundation grant means a project researching the use of urgency in Parliament has started. Associate Professor Elisabeth McDonald and Senior Lecturer Yvette Tinsley are currently researching comparative sexual trial process in collaboration with the Law Commission. Their report will be published in June 2011.

The vigorous and constant programme of conferences, public lectures and international visitors provides a stimulating and supportive learning situation.

Victoria's Faculty of Law plays an important role in the intellectual life of the capital city. It is located in the heart of Wellington's legal and political district, next door to the Courts, Executive Government and Parliament. The current Attorney-General, a law alumnus from Victoria, worked as an adjunct lecturer for many years and maintains a close relationship with the Faculty.

The Faculty's own research publication, the *Victoria University of Wellington Law Review*, offers an opportunity for postgraduate students to have their work published, while the *New Zealand Journal of Public and International Law* offers world-class writing on those key areas of speciality.

RESEARCH CENTRES

- ☒ New Zealand Centre for Public Law
www.victoria.ac.nz/nzcpl
- ☒ New Zealand Centre for International Economic Law
www.victoria.ac.nz/law/Centres/nzciel

RESEARCH STRENGTHS

- ☒ Consumer law
- ☒ Contract law
- ☒ Criminal law
- ☒ Dispute resolution
- ☒ Environmental law
- ☒ Ethics
- ☒ Indigenous rights
- ☒ Intellectual property law
- ☒ International law
- ☒ International trade, labour and employment law
- ☒ Legal history
- ☒ Torts
- ☒ Treaty of Waitangi law
- ☒ Youth justice

QUALIFICATION	DURATION (TRIMESTERS)	TRIMESTER START	TYPE OF PROGRAMME	ENTRY REQUIREMENTS	CLOSING DATE	DELIVERY METHOD
Master of Laws	2-3	1 or 2	Coursework or research	LLB(Hons) or LLB or other undergraduate degree with relevant professional experience	10 December	On campus
Graduate Certificate in Law	1	1 or 2	Coursework	LLB or adequate experience and a proven ability to study law courses	10 December	On campus
PhD—Law	6+	Any	Research	Honours or Master's degree in a relevant discipline	1 March, 1 July or 1 November	On campus

Honours not included because in Law it is part of the undergraduate programme.



JOY LIDDICOAT

LLM STUDENT

Joy Liddicoat is a lawyer with her own law practice in Wellington specialising in public law and human rights. Her clients include government, private sector and community organisations in New Zealand and the Pacific.

In 2008 Joy was asked by a client to prepare a complex piece of draft legislation. While she had good skills, she wanted to make sure she was fully up-to-date with the latest practices so decided to enrol in a postgraduate course on law drafting taught by Professor Tony Angelo. While not planning on doing further postgraduate study, Joy ended up doing a research essay on copyright and the internet and decided to learn more. Completing a Master's was the next obvious step.

Joy's research evaluates the effectiveness of the private dispute resolution service set up by InternetNZ in 2006 for disputes involving New Zealand domain names (website addresses that end in .nz), of which there are nearly 400,000. She is examining why that service was set up, how it has been working, what sorts of complaints have been made and the outcomes.

She chose her research topic because it is related to the business of the Domain Name Commission Limited, of which she is the Director, and also because as a member of InternetNZ she was interested in finding out more about its work. Joy studies part-time and has to juggle her law practice and other commitments, including as a Commissioner with the New Zealand Human Rights Commission. Studying towards an LLM has given Joy the chance to meet other postgraduate students and hear about other legal research projects and it has helped deepen her understanding of important global issues such as access to the internet, and the human rights and legal implications of those issues.



FACULTY OF SCIENCE

SCHOOL OF BIOLOGICAL SCIENCES
SCHOOL OF CHEMICAL AND PHYSICAL SCIENCES
SCHOOL OF GEOGRAPHY, ENVIRONMENT
AND EARTH SCIENCES
SCHOOL OF MATHEMATICS, STATISTICS
AND OPERATIONS RESEARCH
SCHOOL OF PSYCHOLOGY

FACULTY OF SCIENCE

Cotton Building, Kelburn Campus

PHONE 04-463 5101

FAX 04-463 5122

EMAIL science-faculty@vuw.ac.nz

WEBSITE www.victoria.ac.nz/science

Victoria's Faculty of Science offers a wide variety of graduate programmes, excellent facilities and top-level research supervision in a wide range of sciences. There are five science schools, each with a long history of excellence in teaching and research, in which graduate students play an essential role.

Wellington has the highest concentration of scientists and science organisations in New Zealand, many of which have formed very close links with Victoria University, underpinning our education and research programmes. These collaborations, and the quality of our staff and resources, give our students a definite edge when it comes to their future employment opportunities.

RESEARCH CENTRES AND UNITS

- ☒ Centre for Biodiscovery
www.victoria.ac.nz/biodiscovery
- ☒ Centre for Biodiversity and Restoration Ecology
www.victoria.ac.nz/biodiversity
- ☒ Centre for Marine Environmental and Economic Research
www.victoria.ac.nz/cmeeer
- ☒ Malaghan Institute for Medical Research
www.malaghan.org.nz
- ☒ The MacDiarmid Institute for Advanced Materials and Nanotechnology
www.macdiarmid.ac.nz
- ☒ Raman Laboratory
www.victoria.ac.nz/raman
- ☒ Radiation Imaging and Detection Group
www.victoria.ac.nz/xray
- ☒ Antarctic Research Centre
www.victoria.ac.nz/antarctic
- ☒ Centre for Logic, Language and Computation
www.clc.vuw.ac.nz
- ☒ Centre for Applied Cross-Cultural Research
www.victoria.ac.nz/cacr
- ☒ Victoria Psychology Clinic
www.victoria.ac.nz/psyc/centres-and-institutes/vic-psyc-clinic.aspx
- ☒ Victoria University Coastal Ecology Lab
www.victoria.ac.nz/vucel

RESEARCH STRENGTHS

- ☒ Analysis, topography and geometry
- ☒ Applied and numerical mathematics
- ☒ Artificial intelligence
- ☒ Biochemistry, cell and tissue function
- ☒ Biodiversity, conservation, ecology and restoration
- ☒ Brain and behaviour psychology
- ☒ Climate change
- ☒ Clinical psychology
- ☒ Cognitive psychology
- ☒ Computational nanotechnology
- ☒ Cross-cultural psychology
- ☒ Developmental psychology
- ☒ Discrete mathematics
- ☒ Earth surface processes
- ☒ Economic geography and social inequality
- ☒ Environmental sustainability
- ☒ Forensic psychology
- ☒ Globalisation and development
- ☒ Marine biology
- ☒ Materials chemistry
- ☒ Microbiology
- ☒ Molecular evolution
- ☒ Natural hazards
- ☒ Neuroscience
- ☒ Paeleoclimate
- ☒ Proteomics and genomics
- ☒ Reproductive biology
- ☒ Social psychology
- ☒ Social theory and spatial praxis
- ☒ Tectonics

QUALIFICATION	DURATION (TRIMESTERS)	TRIMESTER START	TYPE OF PROGRAMME	ENTRY REQUIREMENTS	CLOSING DATE	DELIVERY METHOD
Graduate Diploma in Science ¹	2	1 or 2	Coursework	Undergraduate degree	Standard trimester closing dates	On campus
Postgraduate Certificate/Diploma in Science ²	Certificate—1 Diploma—2	1 or 2	Coursework	Certificate—undergraduate degree Diploma—BSc	Standard trimester closing dates	On campus
Bachelor of Science (Hons) ³	2	1 or 2	Coursework	BSc	Standard trimester closing dates	On campus
Master of Science*	2 or 4	1 or 2	Coursework and/or research	BSc	Standard trimester closing dates	On campus
Postgraduate Diploma in Biomedical Science	2	1 or 2	Coursework	BBmedSc	Standard trimester closing dates	On campus
Bachelor of Biomedical Science (Hons)	2	1 or 2	Coursework	BBmedSc	Standard trimester closing dates	On campus
Master of Biomedical Science	4	1	Coursework and research	BBmedSc	Standard trimester closing dates	On campus
Master of Computer Science	4	1 or 2	Coursework	BSc in Computer Science or undergraduate degree and extensive professional experience	Standard trimester closing dates	On campus
Postgraduate Certificate in NZ Conservation	1	January	Coursework	Undergraduate degree in relevant subject area	15 October	On campus
Master of Conservation Biology	1.5	January or July	Coursework	Relevant undergraduate degree and professional experience	* See note below	* See note below
Postgraduate Certificate in Marine Conservation	2	January or July	Coursework	Relevant undergraduate degree and professional experience	15 October for January start, 30 May for July start	On campus
Master of Marine Conservation	2-3	January or July	Coursework	Relevant undergraduate degree and professional experience	15 October for January start, 30 May for July start	On campus
Postgraduate Certificate in Meteorology	1	1	Coursework	BSc in Maths, Physics or Geophysics	Standard trimester closing dates	On campus
Postgraduate Diploma in Meteorology	2	1	Coursework	BSc in Maths, Physics or Geophysics	Standard trimester closing dates	On campus
Postgraduate Diploma in Development Studies	2	1	Coursework	Undergraduate degree in relevant subject area or extensive practical experience	1 December	On campus
Master of Development Studies	4	1	Coursework and research	Undergraduate degree in relevant subject area or extensive practical experience	1 December	On campus
Postgraduate Diploma in Environmental Studies	2	1	Coursework	Undergraduate degree in relevant subject area or extensive practical experience	3 December	On campus
Master of Environmental Studies	4	1	Coursework and research	Undergraduate degree in relevant subject area or extensive practical experience	3 December	On campus

* 15 October for January start, 30 May for July start. (Online applications to be made via UNSW website. A AUD \$100 application fee is payable.)

* 50 percent of this programme is taught on campus at Victoria University of Wellington and 50 percent is taught at the University of New South Wales, Sydney.

QUALIFICATION	DURATION (TRIMESTERS)	TRIMESTER START	TYPE OF PROGRAMME	ENTRY REQUIREMENTS	CLOSING DATE	DELIVERY METHOD
Postgraduate Diploma in Clinical Psychology	6	1	Coursework and practicum	BSc(Hons)/BA(Hons) in Psychology and enrolment in thesis degree and selection process	8 October	On campus
Postgraduate Diploma in Clinical Research	2	2	Coursework	An appropriate undergraduate degree in Clinical or Health Sciences	Standard trimester closing dates	Distance delivery with some on-campus contact
Master of Geographic Information Science	4	1	Coursework and research	An appropriate undergraduate degree	Standard trimester closing dates	On campus
PhD—Science	6+	Any	Research	Honours or Masters degree in a relevant discipline	1 March, 1 July or 1 November	On campus

¹ Applied Physics, Applied Statistics, Biology, Biotechnology, Cell and Molecular Bioscience, Chemistry, Computer Science, Development Studies, Ecology and Biodiversity, Environmental Science, Environmental Studies, Geography, Geology, Geophysics (Meterology), Geophysics (Solid Earth), Management Science, Marine Biology, Mathematics, Operations Research, Physical Geography, Physics, Psychology, Statistics.

² Applied Statistics, Biotechnology, Cell and Molecular Bioscience, Chemistry, Cognitive and Behavioural Neuroscience, Computer Science, Conservation, Biology, Cross-cultural Psychology, Ecological Restoration, Ecology and Biodiversity, Geography, Geology, Geomicrobiology (Diploma only), Geophysics, Heritage Materials Science, Logic and Computation, Marine Biology, Mathematics, Molecular Microbiology, Petroleum Geoscience, Physical Geography, Physics, Psychology, Statistics and Operations Research, Stochastic Processes in Finance and Insurance.

³ Applied Statistics, Biotechnology, Cell and Molecular Bioscience, Chemistry, Computer Science, Conservation Biology, Ecology and Biodiversity, Electronic, Geography, Geology, Geomicrobiology, Geophysics, Logic and Computation, Marine Biology, Mathematics, Molecular Microbiology, Physical Geography, Physics, Psychology, Statistics and Operations Research.

⁴ Applied Statistics, Biotechnology, Cell and Molecular Bioscience, Chemistry, Cognitive and Behavioural Neuroscience, Computer Science, Conservation Biology, Cross-cultural Psychology, Ecological Restoration, Ecology and Biodiversity, Geography, Geology, Geomicrobiology, Geophysics, Heritage Materials Science, Logic and Computation, Marine Biology, Mathematics, Mathematics Education, Molecular Microbiology, Petroleum Geoscience, Physical Geography, Physics, Psychology, Science Education, Statistics and Operations Research, Stochastic Processes in Finance and Insurance.



JAIMEE STUART

PhD STUDENT

After Jaimee Stuart finished high school, she spent some time in South America, where she learnt first-hand about the idea of ‘culture shock’.

“It was nothing like my suburban Christchurch upbringing—I couldn’t speak the language, I couldn’t understand the customs and, as a vegetarian, I didn’t eat the food.

“It wasn’t until I started studying psychology that I learnt the name for this experience. What I discovered was that we carry our cultural baggage around with us, expecting to understand other people and expecting them to understand us in turn. But it is really just not that simple, as we don’t know the rules or the values of other cultures, and can only intuit them. I was drawn to cross-cultural psychology because I came to realise just how important one’s cultural world-view is—I wanted to be able to be aware of my own and to be sensitive to others.”

Jaimee’s research examines the phenomena of young migrants to New Zealand doing extremely well both socially and academically, in many cases better than their Pākehā and Māori counterparts, even though they face additional risks such as migration and discrimination. For her PhD, helped by the Ryoichi Sasakawa Young Leaders’ Scholarship, she is looking specifically at how young Muslim migrants overcome such risks and still manage to achieve positive adjustment outcomes.

“My research has equipped me well to pass on my intercultural knowledge to others—I now teach a cross-cultural seminar for the undergraduate Victoria International Leadership Programme (VILP) and have been involved in a variety of intercultural training activities around the University. For the future I aim to finish my PhD in three years, and to continue to do cultural research either within the public sector or as a consultant.”



STUDENT FOCUS

POSTGRADUATE LIAISON OFFICER

Victoria University has a designated Postgraduate Liaison Officer whose role is to assist you when planning to enrol in postgraduate programmes, and to advise mature and post-experience students on the best way to get started with study at Victoria.

PHONE 0800 VICTORIA, option 2

EMAIL postgrad-enquiries@vuw.ac.nz

WEBSITE www.victoria.ac.nz/home/postgraduates.aspx

Links to all the following services can be found at www.victoria.ac.nz/st_services

STUDENT ACADEMIC SERVICES

Student Academic Services provides a range of services to postgraduate students to help you make the most of your time at Victoria. Most services are available at more than one campus and you can choose the most convenient location.

ACCOMMODATION

Finding a place to live in Wellington is as important as choosing the right course of study. The Accommodation Service at Victoria can help you make the right choice and find the accommodation you want whether that is in a homestay, private flat or Hall of Residence.

Full-time Victoria students can apply for a place in a Hall of Residence for the full academic year or, in special circumstances, one trimester. Applications need to reach the Accommodation Service by 1 October in the year preceding study to be considered in the first selection round for Trimester One or by 1 May for Trimester Two intake. For more information, email accommodation@vuw.ac.nz

www.victoria.ac.nz/accommodation

CAREER DEVELOPMENT AND EMPLOYMENT

Vic Careers has professionally trained careers advisers available for informal, confidential discussions about your study and career options. They can help you with a wide range of queries—from the general exploration of career ideas and the career implications of your postgraduate courses to details of specific jobs and employers, and checking draft copies of résumés.

CareerHub provides you with immediate access to job vacancies—part-time, contract, summer/vacation or full-time work.

Vic Careers Resource Centre has detailed information on occupations and employers, and a computer database can provide you with a useful checklist of your career options and training. As a prospective postgraduate student you are especially welcome to visit and use these services.

www.victoria.ac.nz/careers

COUNSELLING

The Counselling Service provides a confidential, professional service for all Victoria students, where you can discuss personal or academic issues affecting your general sense of well-being, your relationships or your learning. Group programmes are also available.

www.victoria.ac.nz/st_services/counselling

STUDENT CRÈCHES

The University crèches provide care and education for students' pre-school children. The Student Crèche has three centres on the Kelburn Campus, and a centre at the Law School, Government Buildings, Pipitea Campus. Applications for the crèche must be made well in advance as places are limited.

www.victoria.ac.nz/st_services/creche

DISABILITY SERVICES

Disability Services facilitates a range of support that enables students with impairments, mental health conditions, injuries, specific learning disabilities, medical conditions or who are Deaf, to access study. Services include: course and assessment arrangements, liaison with other staff, adaptive technology, note-taking support, peer mentors, mobility parking and ergonomic furniture.

www.victoria.ac.nz/st_services/disability

FINANCIAL SUPPORT AND ADVICE

The Student Finance Advisers can help you to manage your money by providing confidential budget advice. They administer the Hardship Fund which provides short-term assistance if you are facing financial difficulties. Grants are available for a wide range of needs including research costs. The advisers deal closely with StudyLink and can assist you with problems associated with Student Allowance and Loan applications.

www.victoria.ac.nz/st_services/finadvice

STUDENT HEALTH SERVICE

Student Health offers you a general practice medical service on campus which is free or very low cost for most students. It deals with illness, accidents and prescriptions, and offers specialist services such as psychiatry, nutrition, dermatology and physiotherapy.

www.victoria.ac.nz/st_services/health

STUDENT LEARNING SUPPORT SERVICE (SLSS)

Depending on whether you are enrolling for coursework or a research degree, there is a range of support available. In order to maximise your success, SLSS runs an intensive Transition to Postgraduate Studies programme at the beginning of each academic year.

www.victoria.ac.nz/st_services/slss

The website www.victoria.ac.nz/postgradlife provides everything you need to know about postgraduate study at Victoria with useful links and information about funding, supervision and managing your studies.

SLSS also has a Postgraduate Learning Adviser, who provides one-to-one consultations on study-related issues and organises postgraduate writing workshops and research skills seminars on topics such as research proposals, literature reviews, ethical approval, developing an argument and quantitative and qualitative research.



FACILITIES AND SERVICES

STUDENT COMPUTING SERVICE

All students receive free email and storage space, access to the student portal system (myVictoria) and access to the library's web-based electronic database. Large suites at all campuses offer access to a range of software, printers, scanners, internet and technical support.

www.victoria.ac.nz/home/viclife/facresourceses.aspx

STUDENT JOB SEARCH

Student Job Search helps students find part-time employment while studying and full-time employment during summer. It is connected to employers in central and wider Wellington, providing eligible students with access to many areas of work.

www.sjs.co.nz

VICTORIA'S FACILITATION AND DISPUTES ADVISORY SERVICE

This service provides information about disputes resolution. Confidential advice is given about all complaints and disputes. Staff can clarify students' concerns and help determine their best course of action.

www.victoria.ac.nz/disputes-advice/

INTERNATIONAL STUDENTS

Victoria International (VI) is the first point of contact for all international students coming to Victoria. The VI team takes care of admissions for all programmes, enrolment and student support during your stay at Victoria. Once you are enrolled at Victoria you also have access to the full range of student services that the University offers.

Orientation begins with your arrival at Wellington Airport, where you will be met by VI representatives, presented with an arrival pack and taken to your accommodation. The orientation programme, which is compulsory for all new international students, takes place in the week before the first week of lectures for both the first and second trimesters. The programme includes an official welcome, a traditional Māori welcome, performances, tours of the city and campus, an introduction to the VI staff and student services, and academic and course advice. After an enrolment briefing, students finish the rest of the week by formally enrolling in their academic programme.

Ongoing support is coordinated by VI staff, while all faculties also have an academic adviser for international students.

www.victoria-international.ac.nz

POSTGRADUATE ORIENTATION

A postgraduate orientation session for Honours or thesis students new to postgraduate study, and for postgraduates newly arrived at Victoria, is held the week before Trimester One starts. You will have the opportunity to meet other postgraduate students and members of the Postgraduate Students' Association, learn about support services, find out more about the library and IT services and familiarise yourself with Victoria.

POSTGRADUATE STUDENTS' ASSOCIATION

Victoria's Postgraduate Students' Association (PGSA) represents the 4,000 postgraduate students at Victoria. Services include advice, advocacy for individuals and groups of postgraduate students, lobbying on issues important to you, representation on a variety of university committees, social activities, seminars, training workshops and information.

In addition, the PGSA organises Victoria's teaching awards ('the Victorias'), and publishes a postgraduate journal, *Third Degree*. The Association is always eager for postgraduates to get involved, and it's a great way of meeting new people.

pgsa-ea@vuw.ac.nz

Subscribe to the PGSA at pgsa-members-subscribe@vuw.ac.nz

www.victoria.ac.nz/pgsa

MINIMUM RESOURCES AGREEMENT

Victoria University together with the PGSA have set down a Minimum Resources Agreement for all thesis students (that is all PhD students and those writing a Master's thesis). This agreement is above and beyond the resources currently available to all students including the following additional facilities and resources:

- ☒ orientation
- ☒ office space and furniture
- ☒ electronic facilities
- ☒ specialised courses and training.

www.pgsa.victoria.ac.nz/files/MRA%202009.pdf

MĀORI STUDENTS

Victoria has a strong Māori community centred on Te Herenga Waka Marae, and our two Māori schools—Te Kawa a Maui, and Te Kura Māori. The University has many dedicated support services, study groups, tutorials, study spaces and computer facilities for Māori students. Mentoring and support for Māori students are offered by every faculty.

For more information, contact the Māori Liaison Officer at frances.rewharewha@vuw.ac.nz

PACIFIC STUDENTS

There are more than 1,000 Pacific students at Victoria, forming diverse and active communities. Victoria recognises the richness that Pacific people and cultures bring to the learning experience and offers a range of Pacific-related postgraduate courses including postgraduate-level studies in Pacific Studies and Samoan Studies/Fa'a Sāmoa.

Students are encouraged to retain their cultural identities, while taking advantage of all that the University has to offer. Victoria has many Pacific cultural groups, including the Pasifika Student Council and associations for Cook Island Māori, Fijian, Samoan and Tongan students which are open for anyone to join.

Victoria is committed to assisting its Pacific students. We have staff, support service and resources available to ensure your success.

For more information, contact the Pacific Liaison Officer at sera.gagau@vuw.ac.nz

STUDENT UNION COMPLEX

The University's 'community centre', the Student Union Complex, provides opportunities to participate in a wide variety of cultural, recreational and social activities. Facilities include those of the Student Union, the Recreation Centre and the Quad Kiosk. The Student Union is a focus for many activities and houses the Student Union management and the Students' Association (VUWSA). As well as social and meeting rooms, the Student Union also has a number of cafés and a large sundeck, Student Notes, vicbooks, the physiotherapy clinic, accommodation service and a National Bank branch.

www.victoria.ac.nz/union

RECREATION CENTRE

The main Recreation Centre is on Kelburn Campus and there are recreation facilities at Pipitea and Karori Campuses. Also at Kelburn there are a fitness studio, tennis courts and the redeveloped Boyd-Wilson Arena and Field complex. The group exercise timetable has more than 40 classes a week, ranging from pilates and yoga to high-intensity classes like body impact. The basketball gym is free for casual use most of the day.

www.victoria.ac.nz/reccentre

CHAPLAINCIES

Anglican and Roman Catholic chaplains provide counselling and group work on a range of ecumenical issues. There are Muslim prayer rooms on all four campuses.

www.victoria.ac.nz/chaplains

FINANCIAL MATTERS

FEES

Tuition fees at Victoria are charged on a per-point basis, which differs for each faculty. International students will need to contact Victoria International for international fees. See the 2010 Fees Statute online at

www.victoria.ac.nz/home/about/policy/academic.aspx

Student Records' online system enables currently enrolled students to check their fees balance and timetable and to view and update their contact details via the internet. You can also pay your university fees by Visa or MasterCard.

www.victoria.ac.nz/fees

HOW TO ENROL

All students wishing to enrol for postgraduate or graduate programmes, except thesis applications, can complete an online enrolment application. If you are unable to apply online and would like a hardcopy enrolment application sent to you, contact postgrad-enquiries@vuw.ac.nz

You will also be invited to register on our database so you can receive further information about studying at Victoria.

Master's by thesis students will complete their application through the relevant school or faculty office (contact details opposite). Students wishing to undertake thesis study will need to talk with staff first to ensure supervision capability.

PhD students must apply through the Faculty of Graduate Research (details opposite). Applications are considered three times a year—1 March, 1 July and 1 November.

All first-time international students need to apply through Victoria International.

DATES

There are two main trimesters—March to June and July to October, plus the summer trimester from November to February.

Online enrolment opens on or about 1 October each year. See www.victoria.ac.nz/enrol for standard closing dates.

Many postgraduate applications have early closing dates—check these dates on faculty or school websites. For more information, go to www.victoria.ac.nz/home/admisenrol/enrol/postgrad

For other university dates, see www.victoria.ac.nz/home/study/dates.aspx

Academic postgraduate prospectuses can be downloaded at www.victoria.ac.nz/home/study/postgrad/prospectuspg.aspx

CONTACTS

VICTORIA UNIVERSITY OF WELLINGTON

PO Box 600, Wellington 6140, New Zealand

PHONE +64-4-472 1000

FAX +64-4-499 4601

EMAIL info-desk@vuw.ac.nz

WEBSITE www.victoria.ac.nz

STUDENT RECRUITMENT, ADMISSION AND ORIENTATION

Level 1, Hunter Building, Kelburn Campus

PO Box 600, Wellington

PHONE 0800 842 867, option 2

EMAIL course-advice@vuw.ac.nz

WEBSITE www.victoria.ac.nz/srca

www.victoria.ac.nz/home/study/postgrad

ENROLMENT OFFICE

Level 1, Hunter Building, Kelburn Campus

PHONE 04-463 5250 or 0800 842 867, option 1

EMAIL enrolment-enquiries@vuw.ac.nz

WEBSITE www.victoria.ac.nz/enrol

SCHOLARSHIPS, GRANTS, AWARDS AND PRIZES

10 Kelburn Parade, Kelburn Campus

PHONE 04-463 5113

EMAIL scholarships-office@vuw.ac.nz

WEBSITE www.victoria.ac.nz/scholarships

FACULTY OF ARCHITECTURE AND DESIGN

139 Vivian Street, Te Aro Campus

PHONE 04-463 6200

FAX 04-463 6204

EMAIL architecture@vuw.ac.nz or

design@vuw.ac.nz

WEBSITE www.victoria.ac.nz/architecture or

www.victoria.ac.nz/design

FACULTY OF COMMERCE AND ADMINISTRATION

Level 1, Railway West Wing, Pipitea Campus

PHONE 04-463 5751

FAX 04-463 5360

EMAIL fca-sao@vuw.ac.nz

WEBSITE www.victoria.ac.nz/fca

FACULTY OF EDUCATION

15 Donald Street, Karori Campus

PHONE 04-463 9500

FAX 04-463 9649

EMAIL education@vuw.ac.nz

WEBSITE www.victoria.ac.nz/education

FACULTY OF ENGINEERING

Cotton Building, Kelburn Campus

PHONE 04-463 5101

FAX 04-463 5122

EMAIL engineering@vuw.ac.nz

WEBSITE www.victoria.ac.nz/engineering

FACULTY OF GRADUATE RESEARCH

10 Kelburn Parade, Kelburn Campus

PHONE +64-4-463 5190

EMAIL pg-research@vuw.ac.nz

WEBSITE www.victoria.ac.nz/fgr

FACULTY OF HUMANITIES AND SOCIAL SCIENCES

Level 4, Murphy Building, Kelburn Campus

PHONE 04-463 5745

FAX 04-463 5183

EMAIL fhss-enquiries@vuw.ac.nz

WEBSITE www.victoria.ac.nz/fhss

FACULTY OF LAW

Government Buildings, Pipitea Campus

PHONE 04-463 6366

FAX 04-463 6365

EMAIL law-enquiries@vuw.ac.nz

WEBSITE www.victoria.ac.nz/law

FACULTY OF SCIENCE

Cotton Building, Kelburn Campus

PHONE 04-463 5101

FAX 04-463 5122

EMAIL science-faculty@vuw.ac.nz

WEBSITE www.victoria.ac.nz/science

CENTRE FOR LIFELONG LEARNING

Level 5, Rutherford House, Pipitea Campus

PHONE 04-463 6556

FAX 04-463 6550

EMAIL conted@vuw.ac.nz

WEBSITE www.victoria.ac.nz/lifelonglearning

VICTORIA INTERNATIONAL

Level 2, Rutherford House, Pipitea Campus

PHONE +64-4-463 5350

FAX +64-4-463 5056

EMAIL victoria-international@vuw.ac.nz

WEBSITE www.victoria-international.ac.nz



Student Recruitment, Admission and Orientation

Phone 0800 VICTORIA (842 867)
+64-4-463 5374
Fax +64-4-463 5193
Email course-advice@vuw.ac.nz
Website www.victoria.ac.nz/srca

Level 1, Hunter Building
Gate 2, Kelburn Parade
Kelburn Campus
Wellington 6012

Victoria University of Wellington
PO Box 600
Wellington 6140
New Zealand

Faculty of Graduate Research

Phone +64-4-463 5190
Email pg-research@vuw.ac.nz
Website www.victoria.ac.nz/fgr

10 Kelburn Parade
Kelburn Campus
Wellington 6012

Victoria International

Phone +64-4-463 5350
Fax +64-4-463 5056
Email victoria-international@vuw.ac.nz
Website www.victoria-international.ac.nz

Level 1, Easterfield Building
Kelburn Parade
Kelburn Campus
Wellington 6012
New Zealand